

THE **24TH**
ANNUAL



Toronto
Symphony
Orchestra

Fine Wine

— AUCTION —



THURSDAY, NOVEMBER 13, 2014

CIBC - COMMERCE COURT WEST, 199 BAY STREET, 56TH FLOOR

The Financial Benefits of Purchasing Wine at the TSO Fine Wine Auction

There are significant cost savings when purchasing wine at charity wine auctions versus commercial wine auctions.

At the TSO charity wine auction, the purchaser pays only the hammer price (i.e. the winning bid).
There is no buyer's premium or additional taxes (HST) charged.

When purchasing wine at a commercial auction, one can pay up to or more than 30% in additional fees, which includes a buyer's premium of approximately 17% and a tax (HST) of 13% payable on both the hammer price and the buyer's premium.

Approximate Cost Comparison on a \$1,000 Wine Purchase (Charity vs Commercial)

	TSO Fine Wine Auction	Commercial Wine Auction
Hammer Price:	\$1,000	\$1,000
Buyer's Premium:	—	\$170
HST on Hammer Price:	—	\$130
HST on Buyer's Premium:	—	\$22
Total Cost to Purchaser:	\$1,000	\$1,322

\$322 Savings
32.2% Difference



24th Annual TSO Fine Wine Auction

A PROJECT OF THE TORONTO SYMPHONY VOLUNTEER COMMITTEE

TSO FINE WINE AUCTION

Thursday, November 13, 2014

CIBC – Commerce Court West, 199 Bay Street, 56th Floor, Toronto

Reception: 5:30 p.m.

Auction: 6:30 p.m.

For more information and to register, please visit

www.tsvc.ca/fine-wine-auction or call 416-593-7769 x359

ALL INQUIRIES AND ABSENTEE BIDS SHOULD BE ADDRESSED TO:

Toronto Symphony Volunteer Committee

Attn: Linda McGeown

212 King Street West, 6th Floor

Toronto, ON, Canada M5H 1K5

Telephone: 416-593-7769 x359

Email: lmcgeown@tso.ca

AUCTIONEER

Stephen Ranger

WINE APPRAISER & CONSULTANT

Robert Jull, Vinifera Wine Services

INVENTORY MANAGEMENT

Warren Porter and Peter Griscti, Iron Gate – Private Wine Management

CATALOGUE PRODUCTION

Photography generously provided by Edward Pond

Design and layout by Patrick Lucero

Edited by Berna Ozunal

Proofread by Linda McGeown, Olga Fershaloff,

Roberta Innes and Marco Mendicino

Produced by Linda McGeown

Printed by Harmony Printing Limited, leaders in environmental compliance, on renewable and responsible paper certified by the Forest Stewardship Council. For more information, visit harmonyprinting.com.



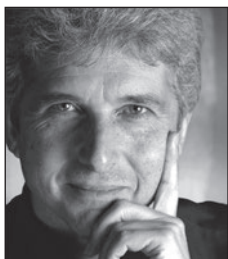
Lot 156

Table of Contents

Messages from the...	
<i>Music Director</i>	4
<i>Toronto Symphony Orchestra President and CEO</i>	4
<i>Toronto Symphony Volunteer Committee President</i>	5
<i>TSO Fine Wine Auction Co-chairs</i>	6
Auctioneer Stephen Ranger	6
Appraiser and Consultant Robert Jull	6
Introduction to the Auction Directory	7
Wine Donors	7
Fine Wine Auction Lots	8
<i>Australia</i>	9
<i>Chile</i>	9
<i>Alsace</i>	9
<i>Red Bordeaux</i>	9
<i>Burgundy</i>	28
<i>Rhône Valley</i>	32
<i>White Bordeaux</i>	33
<i>Champagne</i>	34
<i>Spirits</i>	35
<i>Italy</i>	35
<i>Portugal</i>	38
<i>Spain</i>	41
<i>United States</i>	41
Bidding Procedure	46
Absentee Bid Form	47
Absentee Bid Order Form	48
Terms and Conditions of Sale	49
Level/Ullage Descriptions and Interpretations	50
Fine Wine Auction Volunteer Committee	51

A Message from the Music Director

Toronto Symphony Orchestra



Now celebrating my 11th season as Music Director of the Toronto Symphony Orchestra, I take great pleasure in welcoming you to the 24th annual Fine Wine Auction presented by the Toronto Symphony Volunteer Committee. As always, I am sincerely touched by the TSVC's unwavering support of the TSO. Your generous patronage of the Fine Wine Auction helps the Toronto Symphony Orchestra continue to play a vital role in the cultural life of our city. Through your gifts to this event you support the TSO's music education and outreach programmes, which help us educate tomorrow's concert patrons. I thank you and hope you enjoy the Auction!

Sincerely,

A handwritten signature in dark ink, appearing to read "Peter Oundjian".

Peter Oundjian
Music Director
Toronto Symphony Orchestra

A Message from the President & C.E.O.

Toronto Symphony Orchestra



The 24th annual TSO Fine Wine Auction, presented by the Toronto Symphony Volunteer Committee, continues a distinguished tradition that has firmly established this event as an outstanding special occasion in the Toronto community. With great pleasure I extend my congratulations to the entire volunteer committee, especially to the TSO Fine Wine Auction committee, co-chaired by Roberta Innes and Arthur Gale, for creating an entertaining and exciting event that engages all who participate.

The support of many generous individuals is reflected in the donation of outstanding fine wines. Both donors and wine buyers will experience the satisfaction of knowing that their gifts and purchases respectively support the activities of the Toronto Symphony Orchestra. Thank you for playing your part in supporting the success of the Toronto Symphony Orchestra through your participation in this wonderful fine wine auction.

Yours sincerely,

A handwritten signature in dark ink, appearing to read "Jeff Melanson".

Jeff Melanson
President & C.E.O.
Toronto Symphony Orchestra

A Message from the President



tso | volunteer committee



Thank you for attending and supporting the 24th annual TSO Fine Wine Auction, which has become one of the most successful fundraising events for the Toronto Symphony Orchestra.

Over the past 24 years, through the generosity of our many wine donors, purchasers and participants, the TSVC has raised many millions of dollars in support of the TSO. Our hard work and success ensures that Toronto has a world-class symphony orchestra.

Here are just a few of the activities the TSVC supports and sponsors with the funds raised:

- TSO operations and concerts
- Young People's Concerts on Saturday afternoons for the delight and education of thousands of children
- Bursaries, scholarships and financial support for the Toronto Symphony Youth Orchestra
- Morning with the Symphony programme, which provides a unique opportunity for high school students to attend a working rehearsal of the Toronto Symphony Orchestra

Our sincerest thanks to the very dedicated and hard-working auction committee. Our gratitude to Robert Jull, wine appraiser and consultant at Vinifera Wine Services, and Warren Porter and Peter Griscti for inventory management at Iron Gate – Private Wine Management. We owe much to our esteemed auctioneer Stephen Ranger, Vice-President of Business Development at Waddington's, for his time and expertise in conducting the auction. Our sincerest appreciation to CIBC for generously agreeing to host this very special evening.

I would like to express my deepest thanks to all who make our TSO Fine Wine Auction such an outstanding success. Sponsors, donors, buyers, event participants and volunteers are all so important in ensuring that the Toronto Symphony Orchestra continues to inspire our community.

Sincerely,

Olga Fershaloff

President

Toronto Symphony Volunteer Committee

A Message from the 24th Annual TSO Fine Wine Auction Co-chairs



It has been a very exciting experience to be involved with the annual TSO Fine Wine Auction. This has been one of the Toronto Symphony Volunteer Committee's major fundraisers for the past 24 years. Proceeds from the event support the TSO's very popular and well-known education programmes and contribute to its operating fund.

We want to thank in particular the wine donors and buyers, without whom this event obviously could not take place. We also want to thank our hard-working and effective fine wine auction committee and other TSVC members. Everyone has worked together acquiring wine, marketing and publicizing the event, and organizing the actual auction day. And of course we are extremely grateful to our general manager Linda McGeown, whose encyclopedic knowledge of this event allows it to run so efficiently.



Our heartfelt thanks also goes out to CIBC for once again agreeing to host the auction in this stunning facility.

Roberta Innes & Arthur Gale

Co-chairs, TSO Fine Wine Auction

Auctioneer



Stephen Ranger is Vice-President of Business Development at Waddington's, Canada's leading auction house.

With over 23 years' experience in the art world as an auctioneer, appraiser and consultant, Stephen is a pioneer in the sale of fine wine at auction in Canada. In the last 10 years he has been involved in some of Canada's highest-grossing sales of art and fine wine at auction. As an auctioneer, Stephen contributes his services and expertise to over 20 charitable fundraising auctions each year, raising in excess of \$2 million annually for the community.

Stephen Ranger

Auctioneer

Appraiser & Consultant



Robert Jull is the owner of Vinifera Wine Services, which was established in 1988.

He is a wine importer, specializing in French wines since 1988. Robert travels to France a minimum of two times a year and tastes in all major French viticultural regions. Vinifera currently represents approximately 70 domains. Robert has been involved in wine appraisal for the Toronto Symphony's Fine Wine Auction since 1990. In addition, Robert has been doing wine appraisals for insurance and property dispute situations since 1993, including assessment of perils and tasting. He has extensive international purchasing experience at auction, both at the wholesale and retail levels.

Robert Jull

Wine Appraiser & Consultant
Vinifera Wine Services

Introduction to the Auction Directory

CAVEAT

While every effort has been made to ensure the accuracy of the information about the wines in this catalogue, errors and omissions may occur. The Toronto Symphony Orchestra and the Toronto Symphony Volunteer Committee cannot be held liable if purchased wines do not fit the description contained herein.

ORGANIZATION

This catalogue has been organized according to wine-growing regions. There are many vertical and horizontal groupings to enhance selection and comparability. The auction will be conducted in catalogue order.

WINE INSPECTION AND CONDITION NOTES

As in previous years, all bottles from older vintages have been inspected. Where in any case considerations regarding the label, bottle condition, or the fill level are deemed to have a potential effect on the value or quality of the wine, particulars of that condition have been indicated. As is customary, somewhat greater ullage in older vintages is considered acceptable, provided that no leakage is evident, with no comment necessary.

WINE REVIEWS AND RATING

For wine reviews, we have relied on Robert Parker of the Wine Advocate and Wine Spectator, whose numerical reviews are standards of reference for international wine enthusiasts. Wherever possible, the most recent review for a wine has been used.

Wine Donors

IN APPRECIATION

We gratefully acknowledge the wine donations and generous support of our wine donors, without whom it would not be possible to hold our 2014 Fine Wine Auction in support of the TSO.

We appreciate your positive response and thank you all.

IMPERIALS

(\$20,000 to \$39,999)

Joyce and Larry Dare
Anonymous (1)

JEROBOAMS

(\$5,000 to \$19,999)

Dr. Philip Anisman
Tom Bogart
Joni Boyer
Gary Craig
Dr. Rosalie Hooks
Richard Hunter
Estate of Patrick J. Keenan
Dolly and Max Kerzner
Dr. S.O. Kjellberg
Stephen Sandler
Rhoda and Victor Shields

JEROBOAMS (con't)

(\$5,000 to \$19,999)

Sandra Simpson
Marion and Gerald Soloway
Rahul Suri
Michael Zender
Anonymous (11)

MAGNUMS

(up to \$4,999)

John H. Brown
Chuck Byers
The Case for Wine
Dr. & Mrs. Paul and
Joyce Chapnick
Consulate General of the
United States of America
John and Libby Crossingham

MAGNUMS (con't)

(up to \$4,999)

Rags Davloor
Peter Dowbiggin
Dr. Grant Farrow
Olga Fershaloff
Peter Fitting
Arthur Gale
David Hamilton
Mary and Arthur Heinmaa
Roberta Innes
Don Johnston
Dr. Nolan Kane
R.W. Luba
Peter Luit
James P. Mahoney
Profs. Emeriti Guido and
Olga Pugliese
Maureen and Orest Rudzik

MAGNUMS (con't)

(up to \$4,999)

Samuel Sarick
Sheila Schwenzer-Albertson
James Sharples
Mrs. Monty M. Simmonds
Kenneth J. Smith
Ron and Marnie Szabo
Robert Vipond
Jack and Debra Walker
Ken West
Anonymous (12)

List complete at time of printing.

Fine Wine

A U C T I O N L O T S

CHATEAU HAUT BRUNEAU

1986

CLASSE DE GRAND PRIX

Grand Cru

Pessac-Léognan

Australia

- 1** **CLARENDON HILLS 1997** (2)
Liandra
D'ARENBERG 1998 (1)
Ironstone Pressings
BAROSSA VALLEY ESTATE 1999 (1)
E&E Black Pepper
4 BTS. *Estimate* \$312 – \$416

- 2** **CLARENDON HILLS 1996** (1)
Kangarilla Old Vines
CLARENDON HILLS 1998 (1)
Clarendon Old Vines
CLARENDON HILLS 2004 (2)
Astralis

One of Australia's most prodigious Syrahs, Clarendon Hills' 2004 Syrah Astralis is fashioned from vines planted in 1920, and spends time in 100% new French oak from the cooper, Cadus. It boasts off the charts intensity as well as an opaque purple color, and notes of spring flowers, blueberries, blackberries, roasted coffee beans, pepper, smoke, and a hint of sweet toasty oak. This full-bodied, rich, intense, backward Syrah needs 2-3+ hours in the decanter if one is going to approach it at this point in its life. Anticipated maturity: 2010-2040+. 98 WA

4 BTS. *Estimate* \$1,042 – \$1,389

- 3** **WOLF BLASS 2001** (2)
Brown Label
BROKENWOOD 2002 (1)
Rayner Vineyard
TORBRECK 2002 (2)
The Factor
WOLF BLASS 2002 (1)
Grey Label
YALUMBA 2003 (1)
MGS
D'ARENBERG 2005 (1)
The Dead Arm
8 BTS. *Estimate* \$596 – \$794

Chile

- 4** **ERRAZURITZ 1994** (1 d. mag.)
Reserva
ERRAZURIZ 2002 (1)
Chadwick
ERRAZURIZ 2003 (2)
Chadwick
SENA 2003 (1)
4 BTS. & 1 D. MAG. *Estimate* \$391 – \$521

Alsace

- 5** **DOMAINE ZIND HUMBRECHT 2008** (4)
Clos Saint Urbain - Rangen De Thann
4 BTS. *Estimate* \$444 – \$592
- 6** **ZIND HUMBRECHT 1995** (3)
Clos Windsbuhl
3 BTS. *Estimate* \$436 – \$581

Red Bordeaux

- 7** **CHÂTEAU CANTEMERLE 1966** (1)
Haut-Medoc
hs
CHÂTEAU BELGRAVE 2000 (1)
Haut-Medoc
CHÂTEAU D'ARSAC 2005 (3)
Haut Medoc Cuvee No. 1 Michel Rolland
5 BTS. *Estimate* \$459 – \$612

8 CHÂTEAU BRANE-CANTENAC 1966 (2)

Margaux

1 hs label damage, 1 ts

CHÂTEAU CITRAN 1983 (1)

Haut-Medoc

CHÂTEAU JEAN GAUTREAU DE

SOCIANDO-MALLET 1989 (1)

Haut-Medoc

CHÂTEAU COUFRAN 1996 (2)

Haut-Medoc

vtS

6 BTS. *Estimate \$554 – \$739*

9 CHÂTEAU LA LAGUNE 1982 (2)

Haut-Medoc

2 bn

Unquestionably the greatest La Lagune until the 2005 was conceived, the 1982 exhibits a dense ruby/purple-tinged color along with a big, sweet bouquet of black cherries, licorice, smoky toast, and forest floor, a plush, medium to full-bodied mouthfeel, and sweet tannin. It is close to full maturity, and should keep for another decade. 92 WA

CHÂTEAU SOCIANDO-MALLET 1986 (3)

Haut-Medoc

2bn

5 BTS. *Estimate \$710 – \$947*

10 CHÂTEAU KIRWAN 1970 (1)

Margaux

ts

CHÂTEAU GISOURS 1982 (1)

Margaux

vtS

CHÂTEAU CANUET 1989 (2)

Margaux

CHÂTEAU DAUZAC 1995 (1)

Margaux

5 BTS. *Estimate \$565 – \$754*

11 CHÂTEAU LASCOMBES 1966 (1)

Margaux

bn

CHÂTEAU LASCOMBES 1967 (1)

Margaux

ts

CHÂTEAU LASCOMBES 1970 (1)

Margaux

vtS

CHÂTEAU LASCOMBES 1974 (1)

Margaux

bn

CHÂTEAU LASCOMBES 1975 (2)

Margaux

CHÂTEAU CHÂTEAU DUFORT-VIVENS 2002 (6)

Margaux

12 BTS. *Estimate \$982 – \$1,309*

12 CHÂTEAU MALESCOT ST. EXUPERY 1995 (2)

Margaux

CHÂTEAU MALESCOT ST. EXUPERY 2000 (2)

Margaux

CHÂTEAU MALESCOT ST. EXUPERY 2004 (1)

Margaux

5 BTS. *Estimate \$769 – \$1,025*

13 CHÂTEAU MARGAUX 1966 (1)

Margaux

ts

CHÂTEAU MARGAUX 1970 (2)

Margaux

1 hs, 1 ms label damage

3 BTS. *Estimate \$1,315 – \$1,754*

14 CHÂTEAU MARGAUX 1980 (1)

Margaux

bn

CHÂTEAU MARGAUX 1993 (1)

Margaux

2 BTS. *Estimate \$1,015 – \$1,354*

15 CHÂTEAU MARGAUX 1982 (1)

Margaux
ts

Consistently scoring between 98-100, the superb 1982 Margaux may be slightly bigger, bolder, and more masculine than vintages produced over the last 15-20 years. Its dark plum/purple color is followed by notes of melted tar intermixed with sweet cassis and floral underpinnings. Very full-bodied and dense for a Château Margaux, with a slight rusticity to the tannins, it boasts blockbuster power, richness, and impressive aromatics. It appears set for another 30-40 years of life. 98 WA

1 BT. *Estimate* \$1,374 – \$1,832

16 CHÂTEAU MARGAUX 1983 (1)

Margaux

1 BT. *Estimate* \$1,002 – \$1,336

17 CHÂTEAU PALMER 1970 (1)

Margaux
vts

CHÂTEAU PALMER 1990 (1)

Margaux

This was the finest bottle of the 1990 Palmer I have yet tasted, and it appears I slightly underrated it in earlier reviews. A complex bouquet of earth, blue and black fruits, licorice, incense, and spice box is followed by a round, silky, voluptuous wine that falls just short of achieving the depth and richness found in such recent vintages as 2000, 2005, 2006, and 2008. A very strong, fully mature effort, its balance, purity, depth, and texture suggest it will provide plenty of pleasure over the next 10-12 years. 92 WA

2 BTS. *Estimate* \$1,280 – \$1,706

18 CHÂTEAU RAUSAN SEGLA 1952 (1)

Margaux
ms

CHÂTEAU RAUZAN SEGLA 1995 (1)

Margaux

2 BTS. *Estimate* \$707 – \$943

19 CHÂTEAU RAUSAN-SEGLA 1988 (6)

Margaux

6 BTS. *Estimate* \$1,791 – \$2,388

20 CHÂTEAU CHASSE SPLEEN 1989 (1)

Moulis En Medoc

CHÂTEAU CHASSE-SPLEEN 1995 (1)

Moulis En Medoc

CHÂTEAU CHÂTEAU POUJEAUX 2002 (2)

Moulis En Medoc

4 BTS. *Estimate* \$341 – \$454

21 CHÂTEAU CLERC MILON 2000 (6)

Pauillac

A beautiful wine and one of my favorites from this estate, this blend of nearly two-thirds Cabernet Sauvignon and one-third Merlot is aging impressively. Dense ruby/purple in color, with creme de cassis, charcoal, and sweet leathery and chocolatey notes intermixed with the classic Pauillac cedar and spice box, the wine is medium to full-bodied, fleshy, with sweet tannin and a long finish. It seems to have inched into its window of full drinking maturity, and will stay there for 10-15+ years. 92 WA

CHÂTEAU CLERC MILON 2001 (1)

Pauillac

7 BTS. *Estimate* \$1,112 – \$1,483

22 CHÂTEAU HAUT BAGES MONPELOU 1966 (1)

Pauillac

bn

CHÂTEAU D'ARMAILHAC 2000 (1)

Pauillac

CHÂTEAU HAUT-BAGES LIBERAL 2000 (3)

Pauillac

5 BTS. *Estimate* \$533 – \$711



Lots 30-31

- 23 CHÂTEAU GRAND PUY LACOSTE 1970 (2)**
 Pauillac
 1 hs, 1 vts
CHÂTEAU GRAND PUY LACOSTE 1975 (1)
 Pauillac
 vts
 3 BTS. *Estimate \$1,033 – \$1,378*
- 24 CHÂTEAU GRAND PUY LACOSTE 1982 (3)**
 Pauillac
 1 vts, 2 bn
 This is a tour de force, and one of the all-time great Grand-Puy-Lacoste ever produced, as I hope the 2000 and 2005 will become. This is an inky/purple, beefy, broad, super-rich Pauillac revealing classic creme de cassis notes intermixed with hints of spring flowers and crushed rocks. Full-bodied with sweet tannin, shocking concentration, and layers of fruit, this irresistible 1982 is still an adolescent in terms of its evolution. Anticipated maturity: now-2035. 96 WA
 3 BTS. *Estimate \$1,145 – \$1,527*
- 25 CHÂTEAU GRAND PUY LACOSTE 1996 (2)**
 Pauillac
CHÂTEAU GRAND PUY LACOSTE 2004 (3)
 Pauillac
 5 BTS. *Estimate \$582 – \$776*
- 26 CHÂTEAU GRAND PUY LACOSTE 2001 (6)**
 Pauillac
 6 BTS. *Estimate \$896 – \$1,195*
- 27 CHÂTEAU HAUT-BATAILLEY 1982 (1)**
 Pauillac
 vts
CHÂTEAU HAUT-BATAILLEY 2005 (1)
 Pauillac
 2 BTS. *Estimate \$333 – \$444*
- 28 CHÂTEAU LAFITE ROTHSCHILD 1966 (4 hf. bts.)**
 Pauillac
 3 bn, 1 vts
 4 HF. BTS. *Estimate \$2,028 – \$2,704*
- 29 CHÂTEAU LAFITE ROTHSCHILD 1966 (4 hf. bts.)**
 Pauillac
 3 bn, 1 vts
 4 HF. BTS. *Estimate \$2,028 – \$2,704*
- 30 CHÂTEAU LAFITE ROTHSCHILD 1966 (1 mag.)**
 Pauillac
 vts
 1 MAG. *Estimate \$2,040 – \$2,720*
- 31 CHÂTEAU LAFITE ROTHSCHILD 1966 (1 mag.)**
 Pauillac
 vts
 1 MAG. *Estimate \$2,040 – \$2,720*
- 32 CHÂTEAU LAFITE ROTHSCHILD 1975 (1)**
 Pauillac
 1 BT. *Estimate \$1,002 – \$1,336*
- 33 CHÂTEAU LAFITE ROTHSCHILD 1988 (2)**
 Pauillac
 2 BTS. *Estimate \$1,859 – \$2,478*
- 34 CHÂTEAU LAFITE ROTHSCHILD 1994 (1)**
 Pauillac
 1 BT. *Estimate \$1,015 – \$1,354*

35 CHÂTEAU LAFITE ROTHSCHILD 1995 (2)

Pauillac

The 1995 Lafite-Rothschild (only one-third of the harvest made it into the final blend) is a blend of 75% Cabernet Sauvignon, 17% Merlot, and 8% Cabernet Franc. It exhibits a dark ruby purple color, and a sweet, powdered mineral, smoky, weedy cassis-scented nose. Beautiful sweetness of fruit is present in this medium-bodied, tightly-knit, but gloriously pure, well-delineated Lafite. The 1995 is not as powerful or as massive as the 1996, but it is beautifully made with outstanding credentials, in addition to remarkable promise. Anticipated maturity: 2008-2028. WA 95

2 BTS.

Estimate \$2,153 – \$2,870

36 CHÂTEAU LAFITE ROTHSCHILD 1997 (3)

Pauillac

Only 26% of the crop made it into the final blend, resulting in only 15,000 cases of the 1997 Lafite-Rothschild. Readers should not ignore this wine because of the negative press surrounding the 1997 vintage. It boasts an opaque dense purple color in addition to a gorgeously sweet, expansive perfume of cedar wood, black currants, lead pencil, and minerals. What follows is a fat mid-palate, medium body, explosive fruit and richness, soft tannin, and a velvety texture. It is a beautiful, compelling Lafite-Rothschild that can be drunk young, yet promises to evolve for 15+ years. Although one of the most forward Lafites ever tasted, it is all the more captivating because of this characteristic. Don't miss it! WA 92

3 BTS.

Estimate \$3,490 – \$4,654

37 CHÂTEAU LAFITE ROTHSCHILD 1998 (3)

Pauillac

A blend of 81% Cabernet Sauvignon and 19% Merlot, this wine represents only 34% of Lafite's total harvest. In a less than perfect Medoc vintage, it has been spectacular since birth, putting on more weight and flesh over the last year. This opaque purple-colored 1998 is close to perfection. The spectacular nose of lead pencil, smoky, mineral, and black currant fruit soars majestically from the glass. The wine is elegant yet profoundly rich, revealing the essence of Lafite's character. The tannin is sweet, and the wine is spectacularly layered yet never heavy. The finish is sweet, super-rich, yet impeccably balanced and long (50+ seconds). Anticipated maturity: 2007-2035. WA 98

3 BTS.

Estimate \$5,058 – \$6,744

38 CHÂTEAU LAFITE ROTHSCHILD 1998 (4)

Pauillac

4 BTS.

Estimate \$6,744 – \$8,992

39 CHÂTEAU LAFITE ROTHSCHILD 2000 (2)

Pauillac

2 BTS.

Estimate \$4,002 – \$5,336

- 40 CHÂTEAU LYNCH BAGES 1975** (1)
Pauillac
ts
CHÂTEAU LYNCH-BAGES 1988 (1)
Pauillac
CHÂTEAU LYNCH BAGES 1989 (2)
Pauillac
- The 1989 has taken forever to shed its formidable tannins, but what a great vintage of Lynch Bages! I would rank it at the top of the pyramid although the 1990, 2000, and down the road, some of the more recent vintages such as 2005, 2009 and 2010 should come close to matching the 1989's extraordinary concentration and undeniable aging potential. Its dense purple color reveals a slight lightening at the edge and the stunning bouquet offers classic notes of creme de cassis, subtle smoke, oak and graphite. Powerful and rich with some tannins still to shed at age 22, it is still a young adolescent in terms of its evolution and will benefit from another 4-5 years of cellaring. It should prove to be a 50 year wine. WA 99+
- 4 BTS. *Estimate \$1,527 – \$2,036*
- 41 CHÂTEAU LYNCH BAGES 2001** (6)
Pauillac
- 6 BTS. *Estimate \$1,480 – \$1,973*
- 42 CHÂTEAU MOUTON ROTHSCHILD 1964** (1)
Pauillac
vts
- 1 BT. *Estimate \$914 – \$1,219*
- 43 CHÂTEAU MOUTON ROTHSCHILD 1967** (2)
Pauillac
ts
CHÂTEAU MOUTON ROTHSCHILD 1970 (1)
Pauillac
ts
- 3 BTS. *Estimate \$1,757 – \$2,343*
- 44 CHÂTEAU MOUTON ROTHSCHILD 1971** (3)
Pauillac
1 vts, 2 ts
- 3 BTS. *Estimate \$1,474 – \$1,966*
- 45 CHÂTEAU MOUTON ROTHSCHILD 1973** (1)
Pauillac
vts
CHÂTEAU MOUTON ROTHSCHILD 1978 (1)
Pauillac
ts
- 2 BTS. *Estimate \$1,172 – \$1,563*
- 46 CHÂTEAU MOUTON ROTHSCHILD 1982** (1)
Pauillac
bn
- 1 BT. *Estimate \$1,977 – \$2,636*
- 47 CHÂTEAU MOUTON ROTHSCHILD 1982** (1)
Pauillac
bn
- 1 BT. *Estimate \$1,977 – \$2,636*
- 48 CHÂTEAU MOUTON ROTHSCHILD 1985** (1)
Pauillac
- 1 BT. *Estimate \$611 – \$815*
- 49 CHÂTEAU MOUTON ROTHSCHILD 1986** (1)
Pauillac
bn
- Deep garnet-black colour. An incredible array of aromas on the nose: blackberry, black cherry, tobacco, espresso, leather, black olive and loam. The palate is absolutely seamless from first impression to finish, effortlessly building layers of complexity in the mouth and leading to a very long, earth and spice finish. I can't see how this could possibly be improved so have no alternative but to concede perfection. Drink now to 2045+. WA 100
- 1 BT. *Estimate \$1,514 – \$2,019*

50 CHÂTEAU MOUTON ROTHSCHILD 1994 (1)
Pauillac

The 1994 appears to be the finest Mouton-Rothschild made following the 1986 and before the 1995's conception. The wine exhibits a dense, saturated purple color, followed by a classic Mouton nose of sweet black fruits intermingled with smoke, pain grillee, spice, and cedar. Medium to full-bodied, with outstanding concentration, a layered feel, plenty of tannin, and rich, concentrated fruit, this wine is similar to the fine 1988. Anticipated maturity: 2005-2025. By the way, the Dutch artist, Appel, has created a gorgeous label for the 1994. WA 91

1 BT. *Estimate \$595 – \$793*

51 CHÂTEAU PONTET CANET 1995 (6)
Pauillac

6 BTS. *Estimate \$1,109 – \$1,478*

52 CHÂTEAU PICHON LONGUEVILLE 1989 (5)
Baron

5 BTS. *Estimate \$1,520 – \$2,027*

53 CHÂTEAU PICHON LONGUEVILLE 1990 (1)
Baron

A remarkable vintage for Pichon Longueville Baron, 1990 is one of this estate's two or three finest wines made in the last 40 years. Still inky/blue/purple-tinged to the rim, it reveals an extraordinary bouquet of charcoal, incense, creme de cassis, blue and black fruits, and a hint of licorice as well as an impressively long finish. While drinkable, its evolution is extremely slow, and I would not be surprised to see it last another two decades or more. WA 97

CHÂTEAU PICHON LONGUEVILLE 1993 (1)
Baron

CHÂTEAU PICHON LONGUEVILLE 1995 (1)
Baron

3 BTS. *Estimate \$814 – \$1,086*

54 CHÂTEAU PICHON-LONGUEVILLE 1975 (2)
Baron
1 hs, 1 vts

CHÂTEAU PICHON LONGUEVILLE 1999 (2)

Baron

CHÂTEAU PICHON-LONGUEVILLE 2004 (2)

Baron

6 BTS. *Estimate \$1,478 – \$1,971*

55 CHÂTEAU PICHON LONGUEVILLE 1952 (1)
Comtesse De Lalande
ms

1 BT. *Estimate \$480 – \$640*

56 CHÂTEAU DOMAINE DE CHEVALIER 1982 (2)
Pessac-Leognan
1 bn

**CHÂTEAU DOMAINE DE
CHEVALIER BLANC 2007 (1)**

Pessac-Leognan

CHÂTEAU DOMAINE DE CHEVALIER 2010 (1)

Pessac-Leognan

4 BTS. *Estimate \$771 – \$1,028*

57 CHÂTEAU HAUT-BAILLY 1986 (3)
Pessac-Leognan
1 vts, 2 bn

3 BTS. *Estimate \$538 – \$718*

58 CHÂTEAU HAUT-BERGEY 2000 (12)
Pessac-Leognan

12 BTS. (OWC.) *Estimate \$1,109 – \$1,478*

Lot 60



59 CHÂTEAU HAUT-BRION 1964 (1)

Pessac-Leognan

vtS

CHÂTEAU HAUT-BRION 1970 (1)

Pessac-Leognan

ms

CHÂTEAU HAUT-BRION 1976 (1)

Pessac-Leognan

vtS

3 BTS.

Estimate \$1,476 – \$1,968



60 CHÂTEAU HAUT-BRION 1986 (2)

Pessac-Leognan

2 BTS.

Estimate \$2,045 – \$2,727

61 CHÂTEAU LA MISSION HAUT BRION 1970 (1)

Pessac-Leognan

vtS

CHÂTEAU LA MISSION HAUT BRION 1978 (1)

Pessac-Leognan

One of the top ten wines of the vintage, the glorious 1978 is a candidate for “the” wine of the vintage. Seemingly fully mature (it is more evolved than the 1975), it exhibits a dark garnet color with little lightening at the edge as well as a classic La Mission bouquet of truffles, charcoal, scorched earth, black currants, plums, figs and crushed rocks. A sweet, medium to full-bodied entry on the palate reveals totally resolved tannins, adequate acidity and uncanny richness, complexity, texture and length. This surprisingly dense, concentrated, velvety La Mission-Haut-Brion displays all the complexity of this great terroir. At the peak of its evolutionary track, it is in no danger of falling apart, but prudence suggests drinking it over the next 15-20 years. WA 96

2 BTS.

Estimate \$974 – \$1,298

62 CHÂTEAU LA MISSION HAUT BRION 1982 (3)

Pessac-Leognan

3 bn, 1 vts

A monumental wine, this historic La Mission-Haut-Brion was the last vintage made by the descendants of the Woltner family, who had owned this estate for decades prior to selling it to their neighbors, the Dillon family (the American owners of cross-street rival, Château Haut-Brion). The 1982 admirably demonstrates the magnificence of La Mission as well as the singularity of this amazing terroir.

It remains a majestic, multidimensional, profound Bordeaux with another 20-30+ years of life ahead of it. Remarkably, the 1982 is still in late adolescence and has not yet reached its peak.

One of the handful of perfect wines of the vintage, the La Mission still possesses a remarkably dense ruby/purple color with only a slight garnet and lightening at the edge. The fruit-dominated aromatics reveal lots of cassis, blueberry, scorched earth, black truffle, incense, graphite and high-class, unsmoked cigar tobacco-like notes. Still exhibiting remarkable concentration, enormous body, silky sweet tannin, and no perceptible acidity, the 1982 remains fresh, delineated and super-compelling.

Anticipated maturity: now-2060+. WA 100

3 BTS.

Estimate \$4,811 – \$6,415

63 CHÂTEAU LA MISSION HAUT BRION 1986 (1)

Pessac-Leognan

CHÂTEAU LA MISSION HAUT BRION 1996 (2)

Pessac-Leognan

3 BTS.

Estimate \$1,419 – \$1,892

64 CHÂTEAU LA MISSION HAUT BRION 1989 (1)

Pessac-Leognan

Both La Mission-Haut-Brion and Haut-Brion hit home runs in this vintage. 1989, the 200th anniversary of the French revolution, was an incredibly hot year (surpassed only by 1990 and 2003). Even from barrel the seamless 1989 La Mission revealed a special elixir aspect, tasting like it had been designed by Chanel. It still possesses a blue/purple color with only a hint of garnet creeping in, and the explosive aromatics offer up notes of licorice, creme de cassis, blueberry liqueur, smoky barbecue meats, truffles and graphite. If that's not enough to get one salivating, the palate has never disappointed either. Full-bodied with extraordinary opulence as well as sweet, well-integrated, velvety tannins, this fresh, lively, blockbuster La Mission appears to be one of those rare wines that never goes through a closed, unfriendly stage. It has been a compelling, multidimensional effort from barrel, in its infancy, and as it heads into late adolescence. A remarkable tour de force in winemaking, it is one of the all-time profound La Mission-Haut-Brions. Anticipated maturity: now-2050. WA 100

1 BT.

Estimate \$1,529 – \$2,039

65 VIEUX CHÂTEAU CERTAN 1974 (1)

Pomerol

CHÂTEAU DE SALES 1978 (1)

Pomerol

Stained label

CHÂTEAU MALARTIC-LAGRAVIÈRE 1982 (1)

Pessac-Leognan

CHÂTEAU CERTAN DE MAY 1988 (3)

Pomerol

CHÂTEAU CERTAN DE MAY 1995 (1)

Pomerol

7 BTS.

Estimate \$1,058 – \$1,410



CHATEAU CHEVAL BLANC

1967

St. Emilion

1er Grand Cru Classe
TIERES FOURCAUD-LAPOSTOLLE
PROPRIETAIRES

Château
SAINT-EMILION 1er GRAND CRU CLASSE

WINEGATE IMPORTERS
NEW YORK, N.Y.
CASTLE AND CASTLE

Lot 70



1970

PETRVS

POMEROL



Grand Vin

M. EDMOND LOUBAT
PROPRIÉTAIRE A POMEROL - GIRONDE

MIS EN BOUTEILLES AU CHATEAU

Lot 71

66 CHÂTEAU L'ANGELUS 1978 (2)
St. Emilion
1 vts, 1 ts, both label damage
CHÂTEAU CLINET 1988 (3)
Pomerol
5 BTS. *Estimate \$1,083 – \$1,444*

67 CHÂTEAU LA CONSEILLANTE 1989 (2)
Pomerol
CHÂTEAU BEAU-SEJOUR BECOT 1995 (1)
St. Emilion
CHÂTEAU BELAIR 2000 (2)
St. Emilion
5 BTS. *Estimate \$1,370 – \$1,826*

68 CHÂTEAU LA CONSEILLANTE 1990 (2)
Pomerol
1 bn
This deep ruby/garnet-hued 1990 reveals considerable amber at the edge as well as a knock-out bouquet of cedar, kirsch, licorice, roasted herbs, and spice box. An exuberant, atypically flamboyant effort, it possesses supple texture, medium to full body, sweet fruit, plenty of glycerin, and attractive melted tannin. This wine has been delicious since birth, but additional nuances continue to develop in the bottle. Drink it over the next decade. WA 97

CHÂTEAU CANON LA GAFFELIERE 1996 (1)
St. Emilion
3 BTS. *Estimate \$1,539 – \$2,052*

69 CHÂTEAU LA FLEUR DE GAY 1995 (1)
Pomerol
CHÂTEAU LA GRAVE A POMEROL 1995 (1)
Pomerol
CHÂTEAU LA CROIX DU CASSE 2000 (2)
Pomerol
CHÂTEAU LAFLEUR GAZIN 2004 (3)
Pomerol
7 BTS. *Estimate \$628 – \$837*

70 CHÂTEAU CHEVAL BLANC 1967 (1)
St. Emilion
vts
CHÂTEAU CHEVAL BLANC 1975 (1)
St. Emilion
2 BTS. *Estimate \$1,361 – \$1,815*



71 CHÂTEAU PETRUS 1970 (1)
Pomerol
bn
This dark garnet-colored wine shows considerable amber at the edge. It is a profound Petrus, and certainly one of the great Petrus' of the last half century. The wine has a huge nose of cedar, caramel, vanilla, tobacco, fruitcake, and licorice-infused black cherry jam. It is unctuously textured and very full-bodied, with extraordinary sweetness and glycerin, and a layered, viscous finish. This wine should continue to drink well for at least another 20 years. Anticipated maturity: Now-2025. WA 99
1 BT. *Estimate \$3,500 – \$4,667*

72 CHÂTEAU TROTANOY 1990 (1)
Pomerol
CHÂTEAU GRAND MAYNE 1995 (2)
St. Emilion
CHÂTEAU LASSEGUE 1996 (1)
St. Emilion
CHÂTEAU L'ARROSEE 2000 (2)
St. Emilion
CHÂTEAU LA CROIX ST GEORGE 2007 (1)
St. Emilion
7 BTS. *Estimate \$1,101 – \$1,468*

73 CHÂTEAU LATOUR GRAND VIN 1975 (1)
St. Emilion
bn
1 BT. *Estimate \$1,265 – \$1,687*

74 CHÂTEAU TROTANOY 2000 (6)
Pomerol
owc
6 BTS. *Estimate \$2,563 – \$3,418*

75 CHÂTEAU LATOUR GRAND VIN 1983 (1)
St. Emilion
1 BT. *Estimate \$650 – \$866*

76 CHÂTEAU LATOUR GRAND VIN 1989 (2)
St. Emilion
2 BTS. *Estimate \$1,689 – \$2,252*

77 CHÂTEAU LATOUR GRAND VIN 1990 (1)
St. Emilion
1 BT. *Estimate \$1,343 – \$1,790*

78 CHÂTEAU PAVIE 1975 (2)
St. Emilion
1 bn, 1 vts
CHÂTEAU PAVIE 1982 (1)
St. Emilion
3 BTS. *Estimate \$620 – \$827*

79 CHÂTEAU PAVIE MACQUIN 1995 (5)
St. Emilion
CHÂTEAU PAVIE MACQUIN 2007 (1)
St. Emilion
6 BTS. *Estimate \$770 – \$1,027*

80 CHÂTEAU FIGEAC 1971 (1)
St. Emilion
vts
CHÂTEAU TROPLONG MONDOT 1978 (2)
St. Emilion
2 bn
LE PETIT CHEVAL 1995 (1)
St. Emilion
4 BTS. *Estimate \$722 – \$963*

81 CHÂTEAU CALON SEGUR 1955 (1)
St. Estephe
1 ts
CHÂTEAU CALON SEGUR 1995 (1)
St. Estephe

As I have said many times since I first tasted this wine, the 1995 Calon-Segur is one of the great sleepers of the vintage. The wine has closed down completely since bottling, but it is a sensational effort that may ultimately merit an even higher score. The wine is opaque purple-colored. With coaxing, the tight aromatics reveal some weedy cassis intertwined with truffles, chocolate, and beef blood-like aromas. On the palate, there is an element of sur-maturite (1995 was an extremely late harvest at Calon-Segur), fabulous density and purity, and a boatload of tannin. This deep, broodingly backward, classic Bordeaux will require a decade of cellaring. Anticipated maturity: 2005-2035. WA 92

CHÂTEAU CALON SEGUR 2003 (4)
St. Estephe
CHÂTEAU LILIAN LADOUYS 2003 (1)
St. Estephe
7 BTS. *Estimate \$1,372 – \$1,830*

82 CHÂTEAU COS D'ESTOURNEL 1999 (1)

St. Estephe

CHÂTEAU COS D'ESTOURNEL 2006 (2)

St. Estephe

The exceptional 2006 Cos d'Estournel is composed of 78% Cabernet Sauvignon, 20% Merlot, and 2% Petit Verdot, 55% of the production was utilized. Revealing superb intensity for a 2006 as well as an inky/blue/purple color, and a sweet bouquet of blue and black fruits, licorice, graphite, and charcoal, this full-bodied 2006 possesses high levels of sweet tannin. This wine is characterized by a freshness and precision that give it a 1996-like affinity. Enjoy this beautifully concentrated, exceptionally pure, statuesque Cos d'Estournel over the next 20-25 years. By the way, it was bottled without any fining or filtration. WA 94

3 BTS. *Estimate \$649 – \$866*

83 CHÂTEAU COS D'ESTOURNEL 2001 (6)

St. Estephe

6 BTS. *Estimate \$1,278 – \$1,704*

84 CHÂTEAU MONTROSE 1989 (5)

St. Estephe

This is another near-perfect wine from Montrose. It is an unusual two-grade blend of 70% Cabernet Sauvignon and 30% Merlot. Like a tortoise, the 1989 has finally begun to rival and possibly eclipse its long-time younger sibling, the 1990. The wine is absolutely spectacular and in auction sells for a much lower premium than the 1990. That should change. This is a magnificent Montrose, showing notes of loamy soil undertones, intermixed with forest floor, blueberry and blackberry liqueur and spring flowers. It has a full-bodied, intense, concentrated mouthfeel that is every bit as majestic as the 1990, but possibly slightly fresher and more delineated. This great wine should drink well for another 40-50 years. WA 98+

5 BTS. *Estimate \$2,481 – \$3,308*

85 CHÂTEAU MONTROSE 1999 (6)

St. Estephe

6 BTS. *Estimate \$857 – \$1,142*

86 LA DAME DE MONTROSE 2003 (6)

St. Estephe

6 BTS. *Estimate \$540 – \$720*

87 CHÂTEAU BEYCHEVELLE 1981 (2)

St. Julien

1 vts

CHÂTEAU BEYCHEVELLE 1982 (2)

St. Julien

Beautifully sweet, slightly herbaceous black currant, licorice, and earthy notes emerge from this nearly opaque, dark ruby/purple-tinged 1982. Compared to the more elegant, feminine-styled wine often produced here, it is a beast. Dense, thick, rich, concentrated, and impressive, it can be drunk now and over the next two decades. WA 94

CHÂTEAU BEYCHEVILLE 1995 (1)

St. Julien

5 BTS. *Estimate \$1,000 – \$1,334*

88 CHÂTEAU GLORIA 1975 (1)

St. Julien

vts

CHÂTEAU GLORIA 1978 (3)

St. Julien

3 vts

CHÂTEAU BRANAIRE (DULUC-DUCRU) 1989 (2)

St. Julien

CHÂTEAU BRANAIRE-DUCRU 2009 (1)

St. Julien

7 BTS. *Estimate \$844 – \$1,125*

89 CHÂTEAU LEOVILLE POYFERRÉ 1983 (1)
St. Julien
CHÂTEAU LEOVILLE POYFERRÉ 2006 (13)
St. Julien
14 BTS. *Estimate \$1,557 – \$2,076*

90 CHÂTEAU DUCRU-BEAUCAILLOU 1970 (1)
St. Julien
CHÂTEAU DUCRU-BEAUCAILLOU 1996 (1)
St. Julien
vts

The 1996 is long, with a deep mid-palate. It also reveals tannin in the finish. This wine is remarkable. It is muscular, concentrated, and classic. Bottled in late June, 1998, it exhibits a saturated ruby/purple color, as well as a knock-out nose of minerals, licorice, cassis, and an unmistakable lead pencil smell that I often associate with top vintages of Lafite-Rothschild. It is sweet and full-bodied, yet unbelievably rich with no sense of heaviness or flabbiness. The wine possesses high tannin, but it is extremely ripe, and the sweetness of the black currant, spice-tinged Cabernet Sauvignon fruit is pronounced. This profound, backward Ducru-Beaucaillou is a must purchase. Anticipated maturity: 2008-2035. WA 96

2 BTS. *Estimate \$628 – \$837*

91 CHÂTEAU GRUAUD LAROSE 1982 (1)
St. Julien
bn
CHÂTEAU GRUAUD LAROSE 1985 (1)
St. Julien
bn
CHÂTEAU GRUAUD LAROSE 1986 (4)
St. Julien
2 bn
6 BTS. *Estimate \$1,883 – \$2,510*

92 CHÂTEAU LEOVILLE BARTON 1982 (1)
St. Julien
ts
CHÂTEAU LEOVILLE BARTON 1985 (1)
St. Julien
vts
CHÂTEAU LEOVILLE BARTON 1990 (1)
St. Julien
CHÂTEAU LEOVILLE BARTON 1994 (1)
St. Julien

It is no secret that Anthony Barton's efforts over the last decade at his St.-Julien estate, Leoville-Barton, is resulting in terrific wines at still reasonable prices. This estate has been extremely successful in recent vintages. An impressive, serious, classic Bordeaux for collectors who are willing to forget about it for at least a decade, this well-endowed offering is a 30-year wine. The dense, murky, purple color, closed aromatics, massive flavor richness, and high tannin recall the old, non-compromised, beefy, blockbuster Medocs produced thirty years ago. However, this wine possesses sweeter tannin, and was made under far more sanitary conditions. It is a classic, but patience is definitely required. Anticipated maturity: 2007-2030. WA 90

CHÂTEAU LEOVILLE BARTON 1995 (1)
St. Julien
5 BTS. *Estimate \$964 – \$1,285*



Lot 47

Description found on page 15

93 CHÂTEAU LEOVILLE BARTON 2000 (12)

St. Julien

This is a behemoth – dense, highly extracted, very tannic, broodingly backward, with a dense purple color and very little evolution since it was bottled 8 years ago. Wonderfully sweet cedar and fruitcake notes are intermixed with hints of creme de cassis, licorice, and earthy forest floor. It is full-bodied and tannic, with everything in place, but like so many wines that come from Leoville Barton, it makes a mockery of many modern-day consumers wanting a wine for immediate gratification. Those who bought it should continue to exercise patience and be proud to own a wonderful classic with five decades of longevity ahead of it.

Anticipated maturity: 2018-2050. WA 95+

12 BTS. (OWC.)

Estimate \$2,981 – \$3,974

CHÂTEAU LEOVILLE LAS CASES 1981 (1)

St. Julien

CHÂTEAU LEOVILLE LAS CASES 1990 (1)

St. Julien

As one might expect, this is a brilliant wine, but it remains shockingly young, even for the fast evolving 1990s. Its deep ruby/purple color is accompanied by a classic, nearly restrained set of aromatics that includes notions of sweet black cherries, black currants, lead pencil, and wet stones. In the mouth, it is full-bodied, and while technically low in acidity, there is a freshness, delineation, and classicism in this full-throttle, rich, concentrated, impeccable 1990. While still youthful, it is easy to appreciate despite its substantial tannins. Anticipated maturity: now-2035. WA 96

CHÂTEAU LEOVILLE LAS CASES 2004 (3)

St. Julien

Performing better from bottle than it did from cask, this blend of 76% Cabernet Sauvignon, 13% Merlot, and 11% Cabernet Franc has put on weight over the last year. It exhibits the classic style of both Las Cases and St.-Julien in its deep black currant notes interwoven with sweet cherries, wet stones, and toasty vanillin. Made in a structured, medium to full-bodied style with superb concentration, beautiful purity, and admirable symmetry, this beauty is one of the strongest efforts of the vintage. Anticipated maturity: 2012-2028. WA 93

5 BTS.

Estimate \$1,051 – \$1,402

Lot 55

Description
found on
page 16



95 CHÂTEAU LEOVILLE LAS CASES 1996 (3)

St. Julien

A profound Leoville Las Cases, it is one of the great modern day wines of Bordeaux. This wine's hallmark remains a sur-maturite (over-ripeness) of the Cabernet Sauvignon grape. Yet the wine has retained its intrinsic classicism, symmetry, and profound potential for complexity and elegance. The black/purple color is followed by a spectacular nose of cassis, cherry liqueur, pain grille, and minerals. It is powerful and rich on the attack, with beautifully integrated tannin, massive concentration, yet no hint of heaviness or disjointedness. As this wine sits in the glass it grows in stature and richness. It is a remarkable, seamless, palate-staining, and extraordinarily elegant wine - the quintessential St.-Julien. Anticipated maturity: 2007-2035. WA 98

3 BTS.

Estimate \$1,496 – \$1,994

96 CHÂTEAU TALBOT 1971 (1)

St. Julien

hs

CHÂTEAU TALBOT 1976 (1)

St. Julien

ts

CHÂTEAU TALBOT 1982 (1)

St. Julien

vts

Along with the 1986, the 1982 is one of the greatest Talbots ever made. Far more evolved than its stablemate, Gruaud Larose, it exhibits a dense garnet color to the rim along with a huge, sweet, exotic nose of charcoal, beef blood, licorice, herbs, and black fruits. A hint of figs suggests borderline overripeness, but the wine remains fleshy and full-bodied with sweet tannin and an expansive, heady mouthfeel. While fully mature, it should hold for another decade. WA 95

CHÂTEAU TALBOT 2010 (1)

St. Julien

4 BTS.

Estimate \$637 – \$850

Burgundy

- 97** **DOMAINE LEFLAIVE 1981** (1)
Bienvenues Batard Montrachet Gc
3cm
CAMILLE GIROUD 2002 (4)
Criots Batard Montrachet

5 BTS. *Estimate* \$1,175 – \$1,566
- 98** **MICHEL COLIN-DELEGER 1992** (2)
Chassagne-Montrachet - Les Chenevottes
MICHEL COLIN-DELEGER 2001 (2)
Chassagne-Montrachet 1^{er} Cru Les Chaumees
MICHEL COLIN-DELEGER 2008 (2)
Chassagne-Montrachet - En Remily

6 BTS. *Estimate* \$588 – \$784
- 99** **DOMAINE LOUIS LATOUR 2005** (2)
Corton Charlemagne
LOUIS LATOUR 2006 (1)
Chevalier-Montrachet - Les Demoiselles
CHANSON PERE ET FILS 2010 (1)
Corton-Charlemagne

4 BTS. *Estimate* \$796 – \$1,062
- 100** **DOMAINE LEFLAIVE 2006** (2)
Puligny Montrachet - Les Folatieres
THIERRY PASCAL MONTROT 2008 (2)
Puligny-Montrachet - La Quantesence

4 BTS. *Estimate* \$775 – \$1,034
- 101** **ALAIN HUDELLOT-NOELLAT 1998** (3)
Chambolle-Musigny
DOMAINE COMTE GEORGE DE VOGUE 2003 (1)
Chambolle Musigny
ALAIN HUDELLOT-NOELLAT 2005 (1)
Chambolle-Musigny
ROUX PERE & FILS 2007 (1)
Chambolle-Musigny

6 BTS. *Estimate* \$629 – \$838
- 102** **MOREAU-FONTAINE 1964** (1)
Corton
POULET PERE & FILS 1966 (1)
Beaune Domaine De Saux
SEGUIN MANUEL 1985 (2)
Beaune - Clos Du Roy
DOMAINE DU CHÂTEAU DE MEURSAULT 1998 (1)
Beaune-Cent-Vignes
BOUCHARD PERE & FILS 2005 (1)
Gevrey-Chambertin Lavaux Saint-Jacques
DOMAINE NEWMAN 2006 (1)
Beaune 1^{er} Cru Clos Des Avaux
BOUCHARD PERE & FILS 2008 (1)
Volnay Caillerets

8 BTS. *Estimate* \$830 – \$1,107
- 103** **COMTE GEORGES DE VOGUE 1980** (1)
Bonnes-Mares
PIERRE GELIN 1990 (1)
Chambertin - Clos De Beze

2 BTS. *Estimate* \$760 – \$1,013
- 104** **DOMAINE JACQUES
FREDERIC-MUGNIER 2001** (5)
Bonnes-Mares

5 BTS. *Estimate* \$2,580 – \$3,440
- 105** **MOMMESSIN 1971** (2)
Clos De Tart
3cm

2 BTS. *Estimate* \$828 – \$1,104
- 106** **LIGER-BELAIR 1985** (3)
Clos De Vougeot
5cm, signs of seepage

3 BTS. *Estimate* \$891 – \$1,188



ille Au Châtea

En Boute

Mis

2001

2001

2001

2001

GRAND VIN DE BOURGOGNE
BONNES-MAISONS
GRAND CRU
APPELLATION BONNES-MAISONS
MIS EN BOUTEILLE AU CHATEAU
JACQUES-FRÉDÉRIC MAISON
Propriétaire au Château de Chassaigny
PRODUIT DE FRANCE

GRAND VIN DE BOURGOGNE
BONNES-MAISONS
GRAND CRU
APPELLATION BONNES-MAISONS
MIS EN BOUTEILLE AU CHATEAU
JACQUES-FRÉDÉRIC MAISON
Propriétaire au Château de Chassaigny
PRODUIT DE FRANCE
13%vol.

GRAND VIN DE BOURGOGNE
BONNES-MAISONS
GRAND CRU
APPELLATION BONNES-MAISONS
MIS EN BOUTEILLE AU CHATEAU
JACQUES-FRÉDÉRIC MAISON
Propriétaire au Château de Chassaigny
PRODUIT DE FRANCE

GRAND VIN DE BOURGOGNE
BONNES-MAISONS
GRAND CRU
APPELLATION BONNES-MAISONS
MIS EN BOUTEILLE AU CHATEAU
JACQUES-FRÉDÉRIC MAISON
Propriétaire au Château de Chassaigny
PRODUIT DE FRANCE

Lot 112

SOCIÉTÉ CIVILE DU DOMAINE DE LA ROMANÉE-CONTI
PROPRIÉTAIRE A VOSNE-ROMANÉE (COTE-D'OR) FRANCE

RICHEBOURG

APPELLATION RICHEBOURG CONTROLÉE

14.772 Bouteilles Récoltées

BOUTEILLE N° 09355
ANNÉE 1999

LES ASSOCIÉS-GÉRANTS

Henri-Frédéric Roch
A. de Villaine

Mise en bouteille au domaine

- 107 R. D'HERVILLE 1976 (1)**
Echezeaux
3cm
DOMAINE DE LA ROMANEE CONTI 2004 (1)
Echezeaux
2 BTS. *Estimate \$1,291 – \$1,721*
- 108 PASCAL MARCHAND (TAWSE) 2008 (2)**
Gevrey-Chambertin
PASCAL MARCHAND (TAWSE) 2008 (4)
Gevrey Chamvertin - Les Cazetiers
PASCAL MARCHAND (TAWSE) 2009 (2)
Morey Saint Denis - Clos Des Mormes
8 BTS. *Estimate \$670 – \$893*
- 109 DOMAINE DE LA ROMANEE CONTI 1972 (1)**
La Tache
3cm, label damage
1 BT. *Estimate \$1,716 – \$2,288*
- 110 COMTE GEORGES DE VOGUE 1990 (4)**
Musigny
4 BTS. *Estimate \$4,296 – \$5,728*
- 111 GRIVELET PERE & FILS 1952 (1)**
Pommard Grands-Epenots - Clos De Citeaux
CALVERT 1969 (1)
Nuits St Georges
DOMAINE DE L'ARLOT 1999 (2)
Nuits St George - Clos De Forets
4 BTS. *Estimate \$600 – \$800*



- 112 DOMAINE DE LA ROMANEE CONTI 1999 (1)**
Richebourg

Magnificent, the 1999 Richebourg has a saturated, dark ruby color. It explodes from the glass with loads of super-ripe, dark fruits, including blackberries, cassis, plums, and black cherries. This dense, plush, and broad wine has prodigious depth to its roasted red and black fruit-flavored personality. A myriad of spices can be found in its chewy-textured, full-bodied, highly concentrated, powerful character. Its extraordinarily long finish is dominated by fruit, yet copious quantities of sweet and supple tannin can be discerned. Projected maturity: 2006-2018. WA 94-97

1 BT. *Estimate \$3,483 – \$4,644*

Rhône Valley

- 113 CHÂTEAU DE BEAUCASTEL 2001** (6)
Châteauneuf De Pape
CHÂTEAU DE BEAUCASTEL 2005 (1)
Châteauneuf De Pape
- 7 BTS. *Estimate \$1,094 – \$1,459*

- 114 CHÂTEAU RAYAS 2003** (1)
Châteauneuf-Du-Pape Reserve
- The 2003 Rayas Châteauneuf du Pape has gone from strength to strength and now looks to be the finest vintage since the monumental 1995. Deep ruby to the rim with that classic Rayas nose of flowers, kirsch liqueur, black raspberries, crushed rocks, and minerals, the wine is dense and concentrated, with a broad, savory mouthfeel, sweet yet silky tannin, fabulous persistence, and a blockbuster finish that just goes on and on. This is a reassuringly profound Rayas that seems to suggest that Emmanuel Reynaud has finally figured out this cold-climate terroir in a warm climate appellation. This wine should be given 3-4 years of bottle age, and drunk over the following 20+ years. WA 95

- CHÂTEAU RAYAS 2004** (1)
Châteauneuf De Pape
- 2 BTS. *Estimate \$825 – \$1,100*

- 115 LUCIEN GABRIEL BARROT 1976** (1)
Châteauneuf Du Pape
DOMAINE MATHIEU 1997 (1)
Châteauneuf De Pape
DOMAINE DU PEGAU 2005 (1)
Châteauneuf De Pape
DOMAINE DU VIEUX LAZARET 2005 (1)
Châteauneuf De Pape Cuvee Exceptionelle
DOMAINE DU VIEUX TELEGRAPHE 2005 (1)
Châteauneuf De Pape La Crau
DOMAINE LUCIEN BARROT ET FILS 2005 (1)
Châteauneuf De Pape
DOMAINE CHANTE CIGALE 2007 (1)
Châteauneuf-Du-Pape
MAS DE BOISLAUZON 2007 (1)
Châteauneuf-Du-Pape
MOMMESIN 2010 (1)
Châteauneuf De Pape
- 9 BTS. *Estimate \$655 – \$873*

- 116 GUIGAL 1982** (1)
Hermitage
NOEMIE VERNAUX 1985 (1)
Hermitage
PAUL JABOULET AINE 1994 (1)
Cornas - Domaine De Saint-Pierre
M. CHAPOUTIER 1995 (1)
Hermitage - La Sizeranne
LA SABAROTTE 2005 (1)
Cornas
NICOLAS PERRIN 2007 (1)
Cote-Rotie
DOMAINE DE BONSERINE 2008 (4)
Cote Rotie - La Sarrasine
- 10 BTS. *Estimate \$829 – \$1,106*

117 M. CHAPOUTIER 2000 (6)

Pavillon

The Domaine des Beates is a blend of 40% Grenache, 30% Syrah, and the rest Carignan and Cabernet Sauvignon. The 2000 was slightly sweeter, richer, and riper than the 2001, with plenty of strawberry and black cherry fruit, good acidity, medium body, and no hard edges. WA 87

6 BTS.

Estimate \$1,872 – \$2,496

White Bordeaux

118 CHÂTEAU HAUT PEYRAGUEY 1970 (1)

Sauternes

CHÂTEAU FILHOT 1975 (1)

Sauternes

CHÂTEAU DE FARGUES 1983 (1)

Sauternes

CHÂTEAU RIEUSSEC 1986 (2)

Sauternes

CHÂTEAU SUDIRAUT 1996 (1 mag.)

Sauternes

CHÂTEAU DE FARGUES 1997 (1 hf. bt.)

Sauternes

5 BTS., 1 HF. BT. & 1 MAG. *Estimate* \$1,074 – \$1,432

119 CHÂTEAU D'YQUEM 1975 (1)

Sauternes

The 1975 may turn out to be the greatest of the modern-day Yquems. When fully mature in another 25-30 years, it may rival the extraordinary 1937 and 1921. This wine continues to evolve at a stubbornly slow pace. It is far more backward than recent vintages such as 1983 and 1986. Nevertheless, it is awesomely concentrated, has perfect balance, and displays the telltale Yquem aromas of vanillin oak, tropical fruit, pineapples, honeyed peaches, and grilled almonds. There is exceptionally crisp acidity that pulls all of the massive extract into precise focus. This is a wine of astonishing power and finesse, with a finish that must be tasted to be believed. It is a monumental effort that may well justify a perfect score in another decade. Anticipated maturity: 2005-2060. WA 99

CHÂTEAU D'YQUEM 1988 (2 hf. bts.)

Sauternes

The 1988 d'Yquem has an incredibly profound nose of orange marmalade, dried apricots, honeycomb, musk and dried pineapple with hints of marzipan and crystallized ginger. The palate is seamless with a great line of crisp acid cutting through the densely packed dried tropical fruit and honeyed flavour layers. The finish just goes on and on. WA 98

CHÂTEAU D'YQUEM 1998 (2 hf. bts.)

Sauternes

1 BT. & 4 HF. BTS.

Estimate \$2,145 – \$2,860

120 CHÂTEAU LA FLEUR D'OR 2001 (12 hf. bts.)

Sauternes

12 HF. BTS.

Estimate \$475 – \$634

Champagne

Lot 124

121 MOET & CHANDON 1978 (1)

Dom Perignon

MOET & CHANDON 1988 (1 mag.)

Vintage

1 BT. & 1 MAG. *Estimate \$719 – \$958*

122 MOET ET CHANDON 1990 (1)

Cuvee Dom Perignon

MOET & CHANDON 1996 (1)

Dom Perignon

MOET & CHANDON 2000 (1)

Dom Perignon

3 BTS. *Estimate \$986 – \$1,315*

123 POL ROGER 1996 (1)

Vintage

PERRIER JOUET 2000 (1)

Belle Epoque

PERRIER JOUET NON VINTAGE (1)

Grand Brut

3 BTS. *Estimate \$440 – \$586*



124 SALON 1985 (1)

La Mesnil Blanc De Blancs

1 BT. *Estimate \$858 – \$1,144*



Spirits

125 **COGNAC NAPOLEON 1811** (1)
Grande Reserve
MICHEL COUVREUR NON VINTAGE (1 700 ml.)
Grand Bas Armagnac
2 BTS. *Estimate* \$567 – \$756

126 **COURVOISIER NON VINTAGE** (1)
Erte #2
POLIGNAC NON VINTAGE (1 700 ml.)
Xo Royal
REMY MARTIN NON VINTAGE (1 700 ml.)
Vsop
REMY MARTIN NON VINTAGE (1 700 ml.)
Napoleon Extra Old
4 BTS. *Estimate* \$580 – \$774

Italy

127 **CERETTO 1982** (1)
Barolo - Bricco Rocche
ASCHERI 1998 (2)
Barolo - Vigna Dei Pola
CAMPOGIOVANNI 1998 (1)
Brunello Di Montalcino Riserva - Ripe Al Convento
MASTROBERARDINO 1999 (3)
Radici
7 BTS. *Estimate* \$809 – \$1,078

128 **CORINO 1996** (5)
Barolo - Vigna Giachini
5 BTS. *Estimate* \$660 – \$880

129 **MARCHESI DE BAROLO 1967** (1)
Barolo
FONTANAFREDDA 1998 (2)
Barolo - Vigna La Rosa
GIRIBALDI 2004 (1)
Barolo
LUCIANO SANDRONE 2008 (1 mag.)
Barolo - Le Vigne

Sandrone's 2008 Barolo Le Vigne is a wine of breathtaking textural finesse and elegance. Nothing really stands out, so phenomenal is the wine's balance and sense of harmony. This is the kind of wine that is easy to overlook because it doesn't ask for attention and isn't showy. Instead, everything is simply in the right place. The finest, most silky of tannins support a core of sweet red berries, flowers, mint and spices, all of which are woven together with total refinement. The eternal, nuanced finish bodes very well for the future. This is a dazzling effort from Luciano and Luca Sandrone. Le Vigne is made from parcels in Vignane, Ceretta, Conterni and Merli. There is little question that the blending of fruit from several sites was a huge advantage in 2008. Anticipated maturity: 2016-2028. WA 97

4 BTS. & 1 MAG. *Estimate* \$629 – \$838

130 **GAJA 1982** (2)
Costa Russi Barbaresco
2 BTS. *Estimate* \$1,651 – \$2,202

131 **GAJA 1999** (2)
Barolo - Sperss
GAJA 2000 (1)
Sito Moresco
3 BTS. *Estimate* \$686 – \$915

132 TERRE DEL BAROLO 1990 (1)
Barolo - Baudana Riserva
SORDO 1996 (1)
Barolo
MARCHESI DI BAROLO 1997 (1)
Barolo - Sarmassa
PALLADINO 1999 (1)
Barolo - Riserva S.Bernado
MARCHESI DI BAROLO 2004 (1)
Barolo - Cannubi

5 BTS. *Estimate \$468 – \$624*

132A SEGHEGIO 2004 (6)
Barolo - La Villa

6 BTS. *Estimate \$810 – \$1,080*

133 RENATO RATTI 2007 (12)
Barolo - Conca

12 BTS. *Estimate \$1,174 – \$1,565*

134 SASSETTI LIVIO 1990 (1)
Brunello Di Montalcino
TENUTA SAN LEONARDO 1997 (6)
San Leonardo

7 BTS. *Estimate \$630 – \$840*

135 ANTINORI 1997 (1)
Guado Al Tasso
ANTINORI 2002 (1)
Solaia
ANTINORI 2003 (2)
Solaia

4 BTS. *Estimate \$875 – \$1,166*


136 CASTELLO DI AMA 1992 (1)
L'Apparita
BANFI 1998 (2)
Brunello Di Montalcino
BANFI 1999 (1)
Brunello Di Montalcino
ANTINORI 2001 (1)
Tignanello
ANTINORI 2008 (1)
Tignanello

The 2008 Tignanello is unquestionably one of the wines of the vintage. The 2008 isn't a huge or obvious Tignanello, rather it is a wine that impresses for its sublime elegance and precision. Understated layers of fruit caress the palate like cashmere in this impeccable, soft wine. There is not a hard edge to be found. Black cherries, tobacco, smoke and licorice are some of the notes that come through on the finish. The flavor profile is decidedly on the dark side, but the wine's structure is medium in body and intensity. In 2008 the Tignanello has more energy, focus and length than the Solaia. It is a fabulous achievement! The 2008 Tignanello is 80% Sangiovese aged in 300-liter French oak barrels (1/3rd new), 15% Cabernet Sauvignon and 5% Cabernet Franc, both aged in 100% new 225-liter French oak barriques. Anticipated maturity: 2014-2024. WA 94

6 BTS. *Estimate \$789 – \$1,052*

137 VAL DI SUGA 1995 (3)
Brunello Di Montalcino
IL POGGIOLO (COSIMI) 1999 (5)
Brunello Di Montalcino
MOCALI 1999 (2)
Brunello Di Montalcino

10 BTS. *Estimate \$940 – \$1,254*



Lot 139

138 ISOLE E OLENA 1997 (1)

Cepparello

POGGIO ROSSO 1997 (1 mag.)

Chianti Classico Riserva San Felice

POGGIO ROSSO 2006 (2)

Chianti Classico Riserva San Felice

3 BTS. & 1 MAG.

Estimate \$435 – \$580

139 TENUTA DELL'ORNELLAIA 1997 (1)

Ornellaia

The 1997 Ornellaia (magnum) is a big, fat wine endowed with tons of fruit. Mocha, coffee beans and ripe, dark fruit emerge from the glass on a rich, opulent frame. The structural elements are easy to overlook, as the tannins are so juicy and ripe, and the fruit is incredibly intense. Simply put, everything is in the right place. The 1997 is also the first Ornellaia in which Merlot is a full 30% of the blend, while Cabernet Sauvignon is 65% and Cabernet Franc is 5%. It is also the first year in which the percentage of new oak is 50%. The 1997 Ornellaia, like many wines from Tuscany that year, is marked by a unique growing season that saw an April frost lower yields dramatically, followed by a hot, dry summer which concentrated the remaining fruit to a level not seen previously. It remains a magnificent example of this Tuscan classic. Anticipated maturity: 2009-2017. WA 95

TENUTA DELL'ORNELLAIA 2001 (1)

Masseto

The 2001 Masseto lives up to its reputation as a modern-day legend. The wine has everything; beautifully delineated aromatics, generous fruit and plenty of structure to support all of the elements. It is a big, massive Masseto endowed with huge fruit and an exotic, powerful personality. An eternal finish rounds things out in style. The 2001 is dazzling from start to finish. Anticipated maturity: 2011-2023. WA 97

2 BTS.

Estimate \$1,798 – \$2,398

140 **MARIN DELLA CORTE 1988** (1)
Amarone Della Valpolicella Classico
BOLLA 1998 (1)
Amarone Della Valpolicella Classico
BOLLA 1999 (1)
Amarone Classico
CESARI 1999 (1)
Amarone Classico
TERRE DI VERONA 2000 (1)
Amarone
FATTORIA DEL BARBI 2003 (1)
Rosso Di Montalcino
CESARI 2007 (1)
Amarone Classico

7 BTS. *Estimate* \$563 – \$750

141 **GUISEPPE QUINTARELLI 1994** (2)
Alzero
GUISEPPE QUINTARELLI 1997 (1)
Amarone Classico

3 BTS. *Estimate* \$1,710 – \$2,280

142 **GUISEPPE QUINTARELLI 1994** (1)
Rosso Del Bepi
GUISEPPE QUINTARELLI 2002 (4)
Rosso Merlo Veronese Igt

5 BTS. *Estimate* \$568 – \$757

143 **GUISEPPE QUINTARELLI 1991** (1)
Valpolicella Classico Superiore
GUISEPPE QUINTARELLI 1997 (1)
Valpolicella

2 BTS. *Estimate* \$687 – \$916

144 **TOMMASI 1997** (2)
Amarone Della Valpolicella Classico
TEDESCHI 1999 (1)
Amarone Della Valpolicella Classico
ZENATO 2001 (1)
Amarone Della Valpolicella Classico
ZENATO 2003 (1)
Ripasso Valpolicella Superiore
TEDESCHI 2006 (2)
Amarone Della Valpolicella Classico

The 2006 Amarone della Valpolicella is fabulous. Dark cherries, plums, menthol, leather and licorice flow effortlessly from this rich, round Amarone. This shows marvelous richness and density while avoiding heaviness in a moderately concentrated style for Amarone. Bitter chocolate and mocha linger on the intense yet beautifully crafted finish. This is another superb effort from Tedeschi. Anticipated maturity: 2012-2022. WA 93

TEDESCHI 2007 (1)
Amarone Della Valpolicella Classico

The 2007 Amarone della Valpolicella Classico is a big, big wine. Plums, mocha, chocolate, spices, new leather and flowers are some of the notes that emerge from this fleshy, large-scaled Amarone. This is a fairly obvious, fruit-driven Amarone, but it works. Firm yet well-balanced tannins frame the insistent finish. Anticipated maturity: 2014-2022. WA 92

8 BTS. *Estimate* \$1,175 – \$1,567

Portugal

145 **COCKBURN'S 1963** (1)
Vintage Port
CHURCHILL'S 1987 (1)
Aqua Alta
CHURCHILL'S 1994 (2)
Vintage Port

4 BTS. *Estimate* \$617 – \$822

146 DOW'S 1991 (1)
Vintage Port

The firmly-structured, moderately tannic, impressively colored and concentrated 1991 Vintage Port is less precocious and more reserved than the 1992 Quinta do Bomfim Vintage Port. It may develop along the lines of the stern but powerful 1977. The wine offers a classic display of black fruits, licorice, and chocolate aromas and flavors, as well as a full-bodied, muscular style with considerable tannin and firmness. Give it 10-12 years of cellaring and drink it over the following 30+. WA 90

DOW'S 1994 (3)
Vintage Port

4 BTS. *Estimate* \$528 – \$704

147 FEIST 1977 (1)
Porto Colheita

SMITH WOODHOUSE 1977 (2)
Vintage Port

KOPKE 1985 (1)
Vintage Port

QUINTA DO VESUVIO 1989 (1)
Vintage Port

5 BTS. *Estimate* \$545 – \$726

148 FONSECA'S 1975 (1)
Vintage Port

FONSECA 1985 (3)
Vintage Port

4 BTS. *Estimate* \$638 – \$851

149 GRAHAMS 1977 (3)
Vintage Port
1 Stained label

Graham is another great port house, producing one of the deepest-colored and sweetest styles of vintage port. Along with Taylor and Fonseca, Graham has probably been the most consistent producer of great port in the post- World War II era. Their tawnys are quite good rather than exceptional, but their vintage ports are truly sublime and sumptuous. WA 93

GRAHAMS 1985 (1)
Vintage Port

4 BTS. *Estimate* \$794 – \$1,059

150 TAYLOR'S 1970 (1)
Vintage Port
Damaged label

TAYLOR'S 1975 (1)
Vintage Port

2 BTS. *Estimate* \$490 – \$653

151 W&J GRAHAMS 1977 (1)
Vintage Port

W&J GRAHAM'S 1988 (1)
Malvedos - Vintage Port

W&J GRAHAM'S 1994 (2)
Vintage Port

4 BTS. *Estimate* \$643 – \$858

152 WARRE'S 1963 (1)
Vintage Port
Stained label

WARRE'S 2000 (1)
Vintage Port

2 BTS. *Estimate* \$443 – \$591



Spain

153 VEGA SICILIA 1999 (3)

Unico

The 1999 Unico is a blend of 90% Tinto Fino and 10% Cabernet Sauvignon, aged for 21-months in large wooden vats, twenty months in new barrel, seventeen months in semi-new barrels and then 24 months in large wooden casks. It has a very intense, austere bouquet with blackberry, cedar, granite and a touch of dried orange peel. It is tightly coiled but unfurls beautifully in the glass, though it retains its rather aloof personality. The palate is medium-bodied with a rounded mulberry and raspberry leaf-infused entry, with bay leaf and graphite underneath. It is linear, focused and precise. It is very harmonious, almost Claret like with great length on the finish that offers a sorbet-like freshness. 96,159 bottles produced. Drink 2016-2030+. WA 92

3 BTS. (OWC.) *Estimate* \$1,582 – \$2,110

154 3 BTS. (OWC.) *Estimate* \$1,582 – \$2,110

155 3 BTS. (OWC.) *Estimate* \$1,582 – \$2,110

United States

156 ABREU 1992 (1)

Cabernet Sauvignon

ABREU 1993 (1)

Cabernet Sauvignon

ABREU 1994 (1)

Cabernet Sauvignon

ABREU 1995 (1)

Cabernet Sauvignon

ABREU 1996 (1)

Cabernet Sauvignon

ABREU 1999 (1)

Cabernet Sauvignon

6 BTS. *Estimate* \$2,020 – \$2,693

157 **ARROWOOD 1993** (1)
Reserve Speciale Cabernet Sauvignon
ARROWOOD 1994 (1)
Reserve Speciale Cabernet Sauvignon

Arrowood's dazzling 1994 Cabernet Sauvignon Reserve Speciale is an exquisite wine made from a blend of vineyards (Wildwood, Smothers, Balbi, Belle Terre, and others). The largest percentage of fruit is from Sonoma Valley, although a small quantity comes from Alexander Valley and Dry Creek. The wine exhibits an opaque purple color, and a spectacular nose of jammy cassis, lead pencil, vanillin, and spice. Thick, unctuously-textured flavors ooze over the palate with extraordinary purity, ripeness, and richness. It is a candidate for 25-30 years of cellaring, although it is soft enough to be drunk young. Production was 1,200 cases, and the wine, like all of the top Arrowood reds, was bottled with neither fining nor filtration. WA 95

B.R. COHN 1994 (1)
Olive Hill Vineyard Cabernet Sauvignon
ARROWOOD 1995 (1)
Reserve Speciale Cabernet Sauvignon

The spectacular 1995 Cabernet Sauvignon Reserve Speciale is a worthy rival to the monumental 1994. It offers an opaque purple color and a knock-out nose of tobacco, jammy cassis, pain grille, and floral scents. This wine has superb extract and purity, full body, multiple layers of richness, and a ripe, seamless, palate-staining finish. Anticipated maturity: 2001-2020.

The Reserve Special wines spend just under two years in oak casks, and are bottled unfiltered and unfiltered. This stunning offering is among the finest of its type. Production is modest (1,700 cases). WA 94

B.R. COHN 1995 (1)
Olive Hill Vineyard Cabernet Sauvignon
ARROWOOD 1997 (1)
Cabernet Sauvignon

6 BTS. *Estimate \$696 – \$928*

158 **NO LOT**

159 **BERINGER 1992** (2)
Private Reserve Cabernet Sauvignon
BERINGER 1996 (1)
Bancroft Ranch Merlot
CAYMUS 1997 (1)
Zinfandel
BERINGER 1999 (1)
Appellation Collection Merlot
CAYMUS 2004 (2)
Special Select Cabernet Sauvignon

7 BTS. *Estimate \$663 – \$884*

160 **DALLA VALLE 1997** (1)
Cabernet Sauvignon
DAVID ARTHUR 1997 (1)
Estate Cabernet Sauvignon
CLARK-CLAUDON 2002 (1)
Estate Grown Cabernet Sauvignon

3 BTS. *Estimate \$499 – \$666*

161 **DIAMOND CREEK 1995** (3)
Volcanic Hill Cabernet Sauvignon
DIAMOND CREEK 1998 (1)
Volcanic Hill Cabernet Sauvignon

4 BTS. *Estimate \$624 – \$832*

162 **DOMINUS 1989** (1)
Estate
DUNN VINEYARDS 1994 (1 mag.)
Howell Mountain

Look out for the behemoth 1994 Cabernet Sauvignon Howell Mountain. This black/purple-colored wine adds a few more nuances (minerals, licorice, and floral scents) to the lavish display of creme de cassis. Full-bodied, with a blockbuster level of extract and density, this is an outstanding Cabernet Sauvignon for readers with patience. Anticipated maturity: 2006-2030. WA 96

DUNN VINEYARDS 2002 (1)
Howell Mountain
DUCKHORN VINEYARDS 2005 (2)
Merlot

4 BTS. & 1 MAG. *Estimate \$625 – \$834*



163 **EBERLE 2007** (1)
Zinfandel

EBERLE 2008 (1)
Cotes Du Robles

EBERLE 2009 (1)
Cabernet Sauvignon

EBERLE 2009 (1)

ROTH 2010 (1)
Cabernet Sauvignon

RUTHERFORD RANCH 2010 (1)
Old Vine Zinfandel

RUTHERFORD RANCH 2010 (1)
Merlot

ROTH 2011 (1)
Chardonnay

ROTH 2011 (1)
Pinot Noir

ROTH 2011 (1)
Sauvignon Blanc

RUTHERFORD RANCH 2011 (1)
Sauvignon Blanc

RUTHERFORD RANCH 2012 (1)
Chardonnay

12 BTS. *Estimate \$261 – \$348*

164 **HARLAN ESTATE 1995** (1)
Napa

The 1995 Proprietary Red Wine is almost as perfect as the 1994. It has gotten even better in the bottle, and remains one of the most remarkable young Cabernet Sauvignons I have tasted. The wine, a blend of 85% Cabernet Sauvignon and 15% Merlot, was aged in 100% new oak, which adds subtle pain grille/toasty scents. This opaque purple-colored Cabernet offers up a nose of smoke, coffee beans, black and blue fruits, minerals, and roasted herbs. It is extremely full-bodied, with spectacular purity, exquisite equilibrium, and a seamless personality with everything in total harmony. This wine possesses all the elements of greatness - individuality, power combined with elegance, extraordinary complexity, remarkable aging potential, and compelling richness without ponderousness. Anticipated maturity: 2001-2027. WA 99

1 BT. *Estimate \$849 – \$1,132*

165 **KEENAN 1980** (1)
Napa Valley Cabernet Sauvignon

LAUREL GLEN 1989 (2)
Sonoma Mountain Cabernet Sauvignon

LAUREL GLEN 1991 (2)
Sonoma Mountain Cabernet Sauvignon

LAUREL GLEN 1993 (2)
Sonoma Mountain Cabernet Sauvignon

JORDAN 2003 (1)
Alexander Valley Cabernet Sauvignon

8 BTS. *Estimate \$754 – \$1,006*

166 **MARCASSIN 1996** (3)
Gauer Vineyard 'Upper Barn' Chardonnay

3 BTS. *Estimate \$749 – \$998*

167 **MARCASSIN 1996** (3)
Lorenzo Vineyard Chardonnay

3 BTS. *Estimate \$693 – \$924*

168 **MAYACAMAS 1999** (3)
Cabernet Sauvignon

MAYACAMAS 2002 (9)
Cabernet Sauvignon

12 BTS. *Estimate \$1,823 – \$2,431*

169 **MERRY EDWARDS 2003** (1)
Windsor Gardens Pinot Noir

MERRY EDWARDS 2004 (1)
Klopp Ranch Pinot Noir

MERRY EDWARDS 2005 (1)
Coopersmith Pinot Noir

MERRY EDWARDS 2006 (1)
Russian River Valley Pinot Noir

MERRY EDWARDS 2006 (1)
Russian River Valley - Olivet Lane Pinot Noir

MERRY EDWARDS 2006 (1)
Sonoma Coast Pinot Noir

6 BTS. *Estimate \$470 – \$627*

- 170** **OPUS ONE 1996** (2)
OPUS ONE 1997 (1)
OPUS ONE 2009 (2)
 5 BTS. *Estimate \$1,934 – \$2,578*
- 171** **RIDGE 1988** (1)
 Geyserville Zinfandel
 bn.
RIDGE 1989 (1)
 Lytton Springs Zinfandel
RIDGE 1990 (1)
 Monte Bello
RIDGE 2007 (2)
 Monte Bello
- A retaste of the flagship wine, the 2007 Monte Bello (a blend from this famous estate of 79% Cabernet Sauvignon, 10% Merlot, 9% Petit Verdot, and 2% Cabernet Franc) reveals a dense ruby/purple wine with a floral, blueberry, and earthy cassis nose and elegant mid-weight flavors with impressive purity and classicism. There is good acidity, firm tannin, and modest alcohol (13.1%). This is not the most concentrated or powerful Monte Bello, but one built on finesse and elegance. According to the back label, only 41% of the production made it into this wine from the 103-acre estate vineyard. Give this wine another good 5-7 years of bottle age and drink it over the following 20-25 years. WA 92+
- 5 BTS. *Estimate \$754 – \$1,005*

- 172** **ROBERT MONDAVI 1987** (1)
 Reserve Cabernet Sauvignon
SPOTTSWOODE 1994 (1)
 Napa Valley Cabernet Sauvignon
ROSENBLUM CELLARS 2001 (2)
 Richard Sauret Vineyard Zinfandel
 4 BTS. *Estimate \$457 – \$610*

- 173** **SEA SMOKE 2007** (1)
 Ten Pinot Noir
SEA SMOKE 2008 (1)
 Southing Pinot Noir
SEA SMOKE 2009 (1)
 Southing Pinot Noir
SEA SMOKE 2010 (1)
 Southing Pinot Noir
SEA SMOKE 2011 (1)
 Southing Pinot Noir
 5 BTS. *Estimate \$768 – \$1,024*

- 174** **SILVER OAK 1994** (1)
 Alexander Valley Cabernet Sauvignon
SILVER OAK 1994 (1)
 Napa Valley Cabernet Sauvignon
SILVER OAK 1995 (1)
 Napa Valley Cabernet Sauvignon
SILVER OAK 1995 (1)
 Alexander Valley Cabernet Sauvignon
 4 BTS. *Estimate \$641 – \$854*

- 175** **TURLEY 1997** (2)
 Dogtown Vineyard Zinfandel
TURLEY 1998 (3)
 Duarte Zinfandel
TURLEY 2004 (3)
 Dusi Vineyard Zinfandel
 8 BTS. *Estimate \$660 – \$880*

- 176** **TURLEY 1997** (2)
 Moore 'Earthquake' Vineyard Zinfandel
TURLEY 1998 (2)
 Tofanelli Vineyard Zinfandel
TURLEY 1998 (1)
 Rattlesnake Acres Petite Syrah
TURLEY 2004 (2)
 Grist Vineyard Zinfandel
 7 BTS. *Estimate \$603 – \$804*

Bidding Procedure

The highest bidder acknowledged by the auctioneer shall be the buyer. The auctioneer has the right to reject any bid and to advance the bidding at his absolute discretion and, in the event of any dispute between the bidders, to determine the successful bidder or to re-offer and re-sell the item in dispute. Should there be any dispute after the sale, the auction's record of final sale shall be conclusive.

The bidding increments in this auction will be determined by the auctioneer. (See below for Bidding Increments.) Any commission bids received that are not at the proper increments will be reduced to the next lowest increment. The auctioneer may change bidding increments at his discretion.

Payment for your successful bids must be made by cash or credit card by Monday, November 24, 2014.

INFORMATION FOR PROSPECTIVE BIDDERS

If this is your first time at a wine auction, the procedure is quite straight forward. After registering, you will be given a numbered paddle. To bid, simply raise your paddle until the bidding reaches your spending limit. Bids will not be subject to HST or a buyer's premium. If you have any questions about bidding, ask a member of the Toronto Symphony Volunteer Committee or staff in attendance at the auction.

BIDDING INCREMENTS

Bidding generally opens below the low estimate and advances in increments of up to 10%, subject to the auctioneer's discretion. Absentee bids that do not conform to the increments set below may be lowered to the next bidding interval.

\$0 to \$100	by \$5
\$100 to \$200	by \$10
\$200 to \$300	by \$20
\$300 to \$500	by \$25
\$500 to \$1,000	by \$50
\$2,000 to \$3,000	by \$200
\$3,000 to \$5,000	by \$250
\$5,000 to \$10,000	by \$500

The auctioneer may vary the increments during the course of the auction at his discretion.

COLLECTING YOUR WINE

Iron Gate – Private Wine Management is the official storage facility of the 2014 TSO Fine Wine Auction and is also responsible for inventory management and delivery to the final purchasers.

Wines will be made available from Thursday, November 27, 2014, and after. Iron Gate's office address is 51 Laird Drive, Toronto, Ontario M4G 3T4, and the storage facility is within 200 metres of the office address. Please call for time confirmation and exact directions to the pick-up location. An appointment is required for pickup.

Alternatively, Iron Gate can deliver to your home or office in Toronto for a fee of \$20 per lot to a maximum of \$60 per delivery. Outside Toronto please call for a quote.

Please call Iron Gate at 416-234-9500 to make arrangements for pickup or delivery.

TSO Fine Wine Auction Absentee Bid Form

DEADLINE FOR ABSENTEE BIDS IS 5:00 P.M. EST. TUESDAY, NOVEMBER 11, 2014

Name (Please Print) _____
Street _____
Town/City _____
Province _____ Postal Code _____
Phone (Bus.) _____ (Res.) _____
(Fax) _____
Email _____
Charge to: Visa Mastercard Amex
Card No. _____
Expiry Date _____
Name on Card _____
Valid Signature _____

To submit your bids, please also complete
the Absentee Bid Order Form on page 48.

TELEPHONE BIDDING

If this is a telephone bidding request, please check here:

Auction time telephone number:

(where you can be contacted during the auction)

**TSO auction staff will phone you prior
to your lot coming up for auction.**

Please complete the Absentee Bid Order Form
on page 48 for all telephone bidding requests.

Bids are to be executed up to but not exceeding the amount
or amounts specified below. Each bid is PER LOT as indicated,
and all bids will be executed and are accepted subject to the
"Conditions of Sale" printed in this catalogue.

I hereby submit the following bids. I would like to limit the
total that I spend to \$_____. I hereby authorize
you to stop my bids after that amount has been reached in
successful bids. I list all my bids in sequential catalogue order.
I understand that I will be informed of any successful bids
prior to Thursday, November 27, 2014.

I acknowledge that the wine purchased at the auction may not
have been tested by the Liquor Control Board of Ontario.

Signature _____ Date _____

Send to:
Toronto Symphony Volunteer Committee
Attn: Linda McGeown
212 King Street West, 6th Floor
Toronto, Ontario M5H 1K5
Phone: 416-593-7769 ext. 359 Fax: 416-591-0213
Email: lmcgeown@tso.ca



Terms and Conditions of Sale

The wines listed in this catalogue, as may be amended by sale room notice or announcement, are being offered for sale by the Toronto Symphony Orchestra and the Toronto Symphony Volunteer Committee for its own account. These Terms and Conditions of Sale constitute the complete terms and conditions on which all of the wines and related items will be offered for sale.

REGISTRATION

Buyers must register before the start of auction bidding. If you are bidding in person, bidding at the auction will be by paddle only. Paddle registration is free and will be available at the TSO Fine Wine Auction from 5:30 p.m. local Toronto time until the end of the auction, Thursday, November 13, 2014. Pre-registration is strongly advised to expedite paddle pick-up. To pre-register, please visit tsvc.ca/fine-wine-auction or contact Linda McGeown at 416-593-7769 ext. 359. Buyers who have pre-registered must still collect their paddles in order to bid. Credit card information will be requested on registration.

ABSENTEE BIDS

Prospective buyers are advised to attend the auction. However, bids will be accepted and executed if received in advance of the auction by mail, email or fax at the offices of the Toronto Symphony Volunteer Committee no later than 5:00 p.m. local Toronto time, Tuesday, November 11, 2014. Absentee bidders are kindly requested to complete the absentee bidding form at the back of the catalogue. Credit card information will be requested and validated. Commission bids submitted to the TSO Fine Wine Auction in writing or otherwise left with the TSO Fine Wine Auction prior to the auction for execution at or below a specified price, will be vetted and executed by the auctioneer for the convenience of bidders.

The Toronto Symphony Orchestra and the Toronto Symphony Volunteer Committee shall not be responsible for failing to execute such bids or for errors relating to the execution of such bids or following any other instructions of any commission bidder.

At the request of the commission bidder, the auctioneer will limit overall expenditures in the auction to a predetermined limit communicated to the auctioneer by the commission bidder. If such a request is made, the auctioneer will stop bidding on new lots as soon as the commission bidder reaches the predetermined limit in successful bids. In the event that received commission bids on a lot are for identical amounts and at auction those commission bids are the highest bids for that lot, the lot shall be knocked down to the person whose commission bid (for the relevant amount) was received first.

TELEPHONE BIDDING

If you cannot attend the auction, you may bid by telephone during the auction by completing the absentee bid form at the back of the catalogue. Arrangements for this must be made in advance of the auction. Your request for a reservation for telephone bidding must be received in advance of the auction, by no later than 5:00 p.m. local Toronto time, Tuesday, November 11, 2014. A representative of the auction will acknowledge your request for telephone bidding. Credit card information will be requested and validated.

Any failure to execute bids or any mistake in doing so cannot be the responsibility of the auctioneer, the Toronto Symphony Orchestra or of the Toronto Symphony Volunteer Committee or its staff or members.

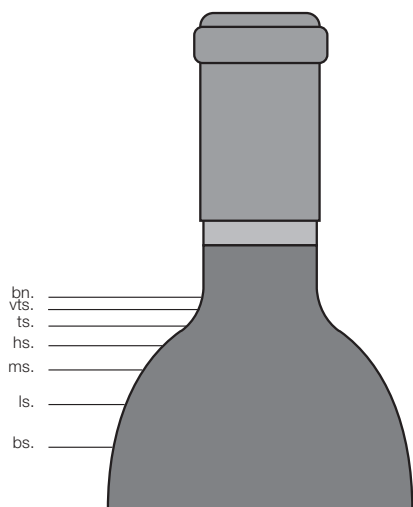
CONDITIONS OF THE WINE

All wine sold at the sale shall be at the buyer's risk.

The Toronto Symphony Orchestra and the Toronto Symphony Volunteer Committee sells all wine exactly as it is and gives no warranty of any kind as to any of the wine, nor shall they be liable in any manner for any error in description, faults, or defects. All warranties and conditions implied by law are hereby excluded. No person shall have recourse against the Toronto Symphony Orchestra or the Toronto Symphony Volunteer Committee for any irregularity or illegality in the sales, or in the conduct of the sale, or of the wine. All wine donations for this auction have been professionally stored at the proper temperature and humidity at an off-site facility.

The wine offered for sale at the Auction may not have been tested by the Liquor Control Board of Ontario. The purchaser of the wine by way of the auction is required by law to acknowledge in writing that the wine may not have been tested by the Liquor Control Board of Ontario. The form for this acknowledgment will be available for signature on registration.

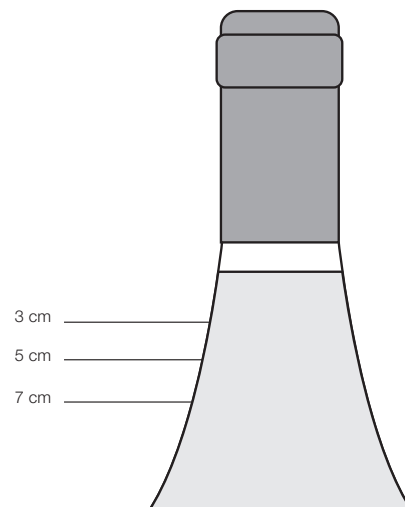
Level/Ullage Description and Interpretations



BORDEAUX LEVELS

For wines in bottles with defined shoulders including Bordeaux, Port and other wines, the level is measured and catalogued as follows:

- bn. **BASE NECK:** Perfectly good for any age of wine. Outstandingly good for a wine of 10 years in bottle, or longer.
- vts. **VERY TOP SHOULDER**
- ts. **TOP SHOULDER:** Normal for any Bordeaux 15 years old or older.
- hs. **HIGH SHOULDER:** Slight natural reduction through the easing of the cork and evaporation through cork and capsule. Usually no problem. Acceptable for any wine over 20 years old. Exceptional for pre-1950 wines.
- ms. **MID SHOULDER:** Probably some weakening of the cork and some risk. Not abnormal for wines 30-40 years of age. Estimates usually take this into account.
- ls. **LOW SHOULDER:** Risky and usually only accepted for sale if wine or label exceptionally rare or interesting. Always offered with low estimate.
- bs. **BOTTOM SHOULDER:** Not acceptable for sale unless a rare sort of bottle. Wine will usually be undrinkable.
- u. **ULLAGE:** Level.
Example: (u. 2ts) means 2 bottles ullaged to top shoulder.
- oc. **ORIGINAL CARTON**
- owc. **ORIGINAL WOODEN CASE**
- RC **RESERVE CHÂTEAU**



BURGUNDY LEVELS

For wines in bottles with sloping necks, including Burgundy, German and other wines, the level between the cork and wine is measured and catalogued in centimetres.

The condition and drinkability of Burgundy is less affected by ullage than its equivalent from Bordeaux. A 5-7-cm. ullage in a 50-year-old Burgundy can be considered normal, indeed good for age; 3.5-4 cm. excellent for age; 7 cm. rarely a risk.

Example: (u. 3x5cm) means 3 bottles ullaged 5 cm.

BOTTLE SIZES

- hf. bt. **HALF BOTTLE** = 0.375 litres
- bt(s). **BOTTLE(S)** = 0.75 litres
- ltr. **LITRE**
- mag. **MAGNUM** = 1.5 litres, or two regular bottles
- d. mag. **DOUBLE MAGNUM** (Bordeaux, Port) = 3 litres
- jero. **JEROBOAM** (Burgundy, Champagne) = 3 litres
- jero. **JEROBOAM** (Bordeaux) = 5 litres*
- imp. **IMPÉRIALE** (Bordeaux) = 6 litres
- meth. **METHUSELAH** (Burgundy, Champagne) = 6 litres
- salm. **SALMANAZAR** = 9 litres

**Up to 1978, jeroboams were generally bottled in 4.5-ltr. bottles.*

TASTING NOTE SOURCES

AM - Allen Meadows CC - Clive Coates WA - Wine Advocate
WS - Wine Spectator IWC - International Wine Cellar

Toronto Symphony Volunteer Committee

2014 FINE WINE AUCTION COMMITTEE

President, TSVC:

Olga Fershaloff

Vice-President, TSVC, Fine Wine Auction:

Debra Walker

General Manager, TSVC:

Linda McGeown

Co-chairs:

Roberta Innes and Arthur Gale

Treasurer, TSVC:

Susan Davies

Secretary:

Jing Roy

Acquisitions, inventory control, and lotting:

Linda McGeown

Acquisitions consultants:

Fran Gruber and Marianne Oundjian

Public relations:

Kathy Buckworth

Marketing:

Hilary Alexander, Liz Nichol and Linda McGeown

Catalogue:

Berna Ozunal and Linda McGeown

Volunteer coordinator:

Thao Nguyen

A project like the TSO Fine Wine Auction is only possible with the help of a dedicated volunteer committee and gracious supporters.

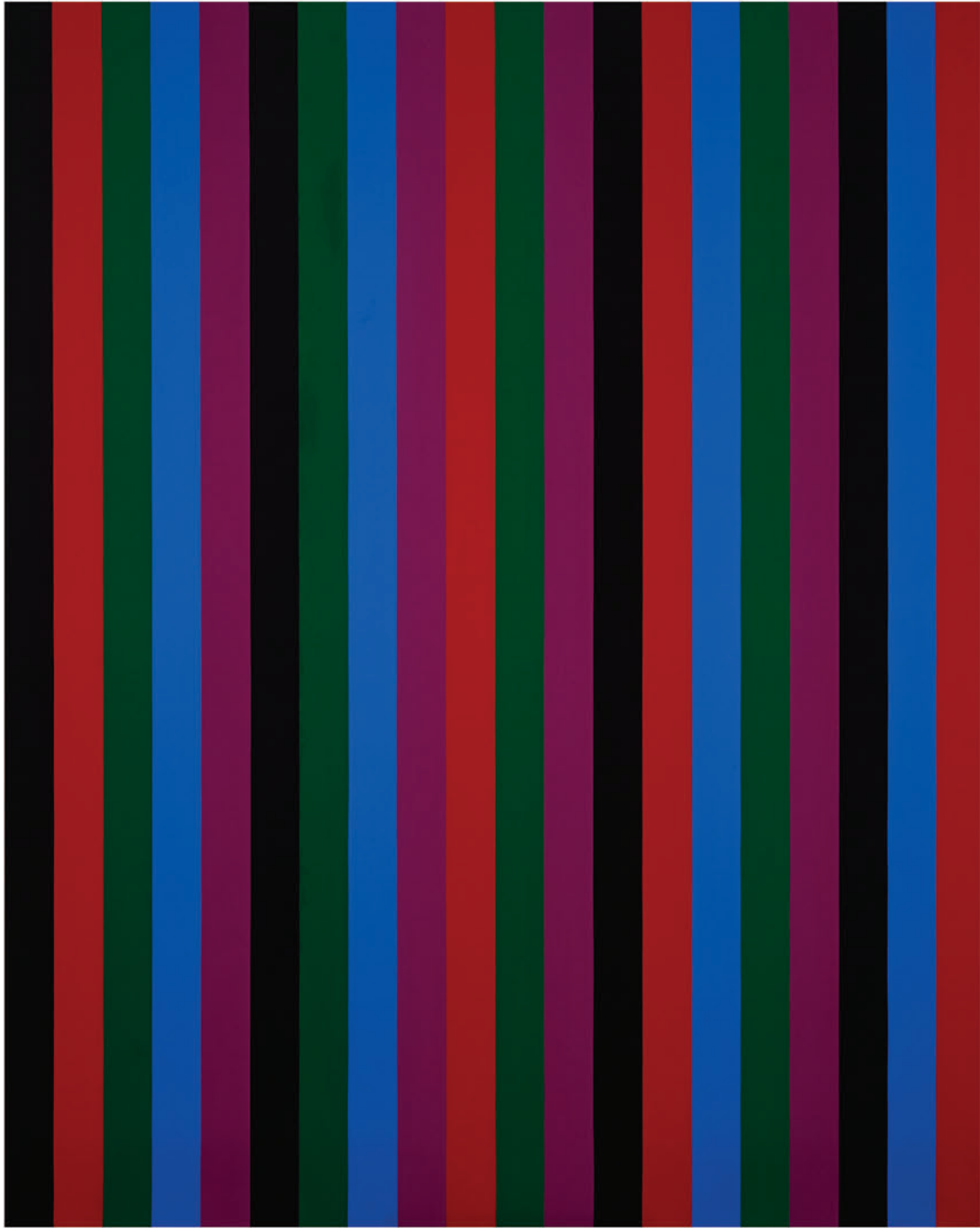
We would like to thank:

The acquisitions call campaign volunteers: Hilary Alexander, Frank Au, Olga Fershaloff, Arthur Gale, Fran Gruber, Roberta Innes, Linda McGeown, Marco Mendicino, Liz Nichol, Thao Nguyen, Marianne Oundjian, Ali Poorghasemi, Jing Roy, Mary Sharkey, and Debra Walker; and auction committee members Sandra Gopaul, Karen Hayward, and Heather Oda (silent auction); and the volunteers who contributed time and effort on the day of the auction.

We also thank our sponsors:

CIBC for their outstanding generosity as sponsor of the Fine Wine Auction evening.

Andrew Peller Limited for providing the wine for the Fine Wine Auction reception.



GUIDO MOLINARI
MUTATION SERIELLE WITH BLACK BAND

Realised: \$200,600

*New Artist's Record

Specializing in Asian, Canadian,
Contemporary, Inuit and International Art,
Decorative Arts and Jewellery. Live and
online auctions.

Waddingtons.ca

275 King Street East
Toronto Ontario Canada M5A 1K2
Tel: 416.504.9100
Toll Free: 1.877.504.5700
Email: info@waddingtons.ca



IRON GATE
Private Wine Management

Caring for Collectors

Iron Gate – Private Wine Management specializes in a host of products and services specifically for wine collectors, including:

✿ **Offsite storage**

We operate a high security, underground, environmentally controlled vault in Leaside, minutes from Forest Hill, Rosedale and Lawrence Park. With over 120,000 bottles under our care we are the largest provider of fine wine storage services in Canada.

✿ **Home Cellar Inventory and Organization**

Our trained professionals can catalogue your entire collection very quickly to get your cellar back in order and you on the right track

✿ **CellarManager**

We offer a complete iPad based cellar management system to tell you where every bottle is located, ratings, drink dates, tasting notes and current values. Plus, you will receive a custom report every quarter advising the makeup of your collection, what was consumed and what you should be drinking in the coming year.

✿ **Wine Buying and Selling**

We offer complete buying services as well as options for offering your wine outside of Ontario. This can include auctions in the US or direct sales in Hong Kong which are inexpensive, simple and completely legal.

✿ **Event Space**

We offer an event space exclusively to our clients that can accommodate a sit down dinner for 35 or a stand up event for up to 100. This beautifully decorated room includes a custom sound system, numerous lighting options and a dry bar.

✿ **Appraisals**

Know the value of your collection for insurance, divorce or estate purposes. This can also include digital photography for complete insurance coverage.

Visit us on the web at www.irongatewine.com or call us at **416.234.9500** to arrange a tour of our event space or storage facility.

Official Storage and Services Provider to the Toronto Symphony Fine Wine Auction



Keeping the arts within reach

At CIBC, we care about nurturing and educating Canada's children and young adults so they can build a better future.

As the arts play a key role in childhood development, CIBC is proud to support **Toronto Symphony Orchestra Fine Wine Auction**, benefitting TSO programmes for performing arts and educational initiatives for young artists and schools across Canada.



TSO

**Toronto
Symphony
Orchestra**

Peter Oundjian
Music Director



SEASON PRESENTING SPONSOR

From Beethoven to The Beatles.

**JOSHUA BELL • BEETHOVEN SYMPHONY 9
YO-YO MA • MOZART MASS IN C MINOR
LANG LANG • TCHAIKOVSKY SYMPHONY 4
DISNEY FANTASIA • HANDEL MESSIAH
BARENAKED LADIES • BEST OF THE BEATLES
... AND MANY MORE!**

**EXPERIENCE THE TSO
FROM ONLY \$29**

CONCERTS EVERY WEEK FROM SEPTEMBER
TO JUNE AT ROY THOMSON HALL

AIR CANADA 

OFFICIAL AIRLINE

TSO.CA

TEAU MIS E



Lot 119



Proceeds from the TSO Fine Wine Auction support
THE TORONTO SYMPHONY ORCHESTRA AND ITS SCHOOL AND COMMUNITY PROGRAMMES.